



#CompuTec  
**ProcessForce**

**LOGRES**  
BUSINESS SOLUTIONS

The Intelligent Solution  
for Advanced Manufacturing

# **#CompuTec** **ProcessForce**

A comprehensive and reliable solution for advanced manufacturers that allows users to enjoy SAP Business One's excellence for key business functions combined with an extensive production functionalities

Supply chain data management

Expanded product information

Manage even the most complex recipes and the most precise processes

Plan and analyze the entire production process

Multi-level quality control infrastructure

Complete audit trail

Comprehensive analytics and forecasting tools

Plan your enterprise's growth

Optimize operations and increase customer satisfaction



**SAP Industry Solution**  
Excellence Award

**SAP Global Solution Partner**  
Leadership in Innovation Award

**SAP Certified**  
SAP Business One Integration

## OUR VERTICAL APPROACH

CompuTecProcessForce was designed in close consultation with industry leaders in the following verticals with careful consideration of their day-to-day operational needs and the challenges their specific industry presents.



## COMPUTEC PROCESSFORCE FOR SAP BUSINESS ONE

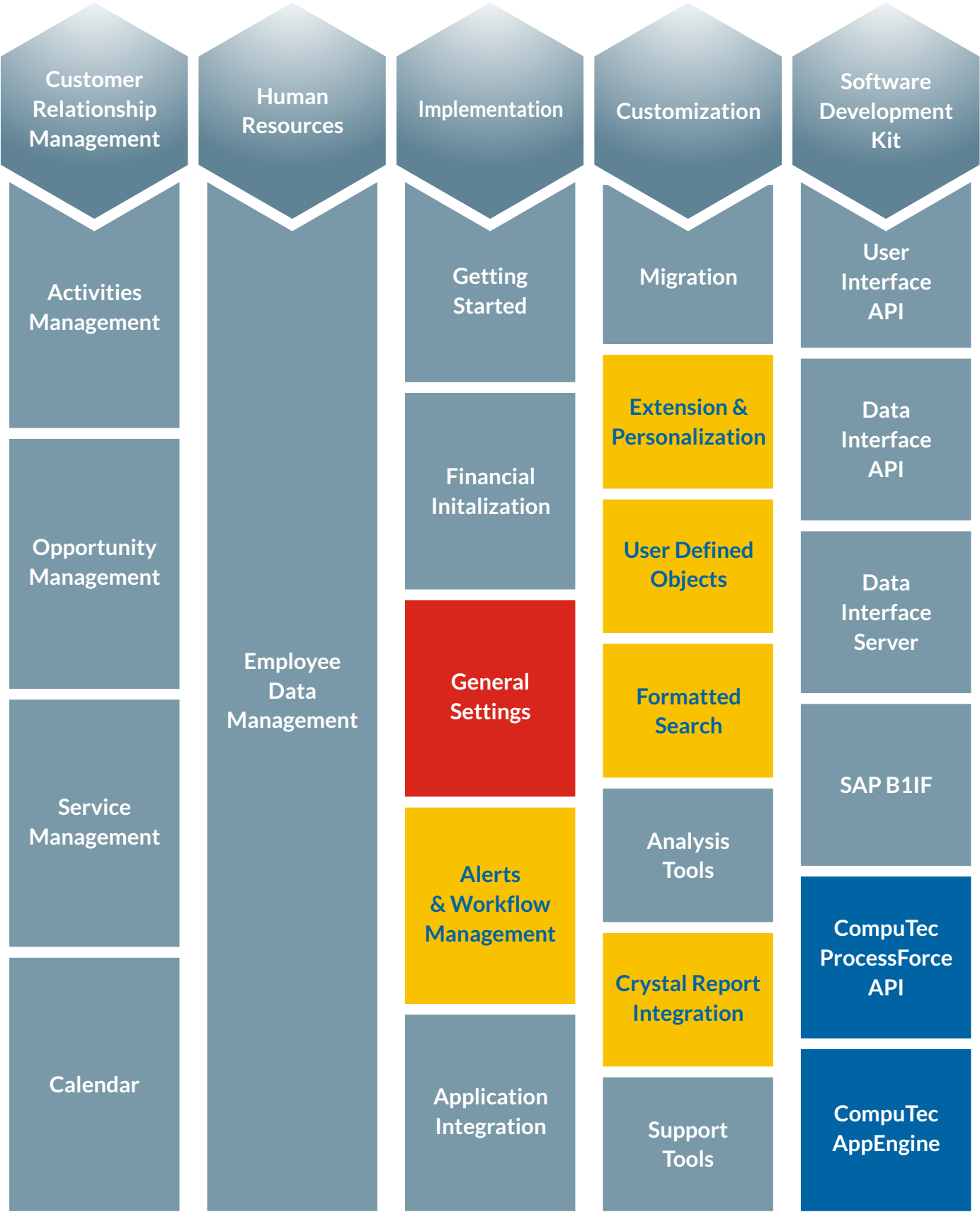
- ✓ Works as an integral part of SAP Business One on-premise or in the cloud
- ✓ Available in 27 languages
- ✓ Consolidates all your data about customers, products, suppliers, resources, inventory and processes into one single database ensuring enterprise-wide data accuracy and consistency
- ✓ Eliminates the need to use multiple spreadsheets, accounting software, bespoke software etc.
- ✓ Full auditability of processes and inventory even at a moment's notice
- ✓ Flexible enough to implement change rapidly even in dynamic industries
- ✓ Extensive customization options so you can continue to do business in the way you know works for your company
- ✓ Reduces time spent on manual processes and record-keeping
- ✓ Facilitates on-time delivery and minimize unplanned downtime and outages
- ✓ Minimizes the potential for human error
- ✓ Operates in real-time
- ✓ Insight into where you are running efficiently and where there is room for improvement
- ✓ Fully scalable to up to 500 concurrent users to support your organization's growth
- ✓ Streamlined workflow, data transparency and planning tools mean you can process a larger, more complex orders and fulfill your business's potential while reducing risk

# COMPUTE C PROCESSFORCE SOLUTION MAP





The combined SAP Business One and CompuTec ProcessForce solution map provides a visualization of the application components, vertical extensions and tool utilization.



- CompuTec ProcessForce adds new processes, functions and reports
- CompuTec ProcessForce uses existing SAP Business One processes, functions and reports, but extended the functionality
- CompuTec ProcessForce uses existing SAP Business One tools to implement and customise CompuTec ProcessForce objects

# PRODUCT DATA MANAGEMENT

With more regulation and increasing customer demands for transparency, it is more important to know exactly what is going into your products than ever before and the sheer volume of data involved can quickly become overwhelming. CompuTec ProcessForce records your data logically and accurately and treats it as a strategic asset. Big data will no longer be a big problem. It will be a big advantage.

- Increase visibility and access relevant data quickly and easily
- Be confident in the integrity of your data and in satisfying regulatory and customer product safety requirements
- Improve supply chain management
- Optimize productivity, resource usage and cycle times
- Facilitate cooperation between teams and departments by ensuring data consistency from a single information repository
- Speed up strategic decision-making backed by analytics and data-driven insights

#	Property Code	Property Name	Expression	Range From	Range To	UoM	Reference Code	Reference Name
1	01	Vapour Density	Equal	3.300	0.000	kg/m³		
2	02	Specific Gravity @25DegC	Equal	1.840	0.000			
3	03	Solubility in Water	Equal	0.000	0.000		04	Yes
4	04	Vapour Pressure	Less than	0.001	0.000	mm Hg @200		
5	05	Odor	Between	0.000	0.000		07	Odorless
6	06	Appearance	Equal	0.000	0.000		06	OK
7	07	Colour	Not equal	0.000	0.000		03	Yellow
8	08	Melting Point	Greater than	10.000	0.000	DegC		
9	09	Boiling Point	Greater than or equal	290.000	0.000	DegC		
10	10	pH	Less than	0.300	0.000	pH		
11			Less than or equal	0.000	0.000			

Date Details	Properties	Attachments	Quality Control	Returns	Inventory	Complaints
Admission	03.08.17				Warning Date Prior Expiry	
Vendor Manufacturing Date	04.08.17				Warning Date Prior Consume	
Expiry Date	30.06.19					
Expiry Time	00:00					
Best Before Date	30.06.19					
Consume by Date						
Last Inspection Date						
Inspection Date						
Next Inspection Date						

## COMPREHENSIVE INGREDIENT, COMPONENT AND PRODUCT DATA

Batch Management	Allocate and manage rules such as expiry and consume by dates and manage shelf life
Storage Rules	Manage stock on a FIFO, FEFO or FMFO basis and maintain the right stock levels for your business
Batch and Serial Numbers	Fully-customizable using pre-defined defaults, templates or manual data input
Ingredient Declarations	For each product and each product revision
Nutrients	Define and manage daily intake recommendations, including on a country by country basis
Country of Origin	Identify the origins of each component part of the finished product quickly and easily
Allergens	Trace allergens and set up allergen alerts and warnings
Pack Serving Sizes	Manage product portions and package volumes
Classifications	Categorize products, e.g. toxic and non-toxic
Properties	Define physical and chemical characteristics and designate properties for quality control tests
Product Groups	Categorize your inventory, set up sub groups and assign codes to ensure optimum safety practices

- Support standardization
- Allocate alternative parts and ingredients when lack of availability demands
- Establish a preferred parts/ingredients list
- Set standard descriptive texts for example hazard instructions, safety text and cleaning information in case of a product spillage

*Now, when we take data from our system,  
we can actually rely on it.*

*James Obeng  
HPW Fresh & Dry Ltd., Ghana*

## MATERIAL SAFETY DATA SHEET (MSDS)

Several regulatory bodies, including the European Union, use set phrases to list information relating to occupational safety and health, special transportation or storage arrangements and potential hazards when working with certain products and substances. By supporting these phrases, CompuTec ProcessForce completely automates the creation of Material Safety Data Sheets so that reassuring your customers of product compliance is quick and painless.

# BILL OF MATERIALS

A detailed and precise Bill of Materials (BoM) is crucial to saving time and avoiding mistakes. CompuTec ProcessForce's expanded BoM will help you to eliminate inefficiencies, material planning issues and the associated costs of these blunders.

- Strategize purchasing and make better material planning decisions
- Optimize cost effectiveness
- Share comprehensive data in real-time to ensure consistency, accuracy and quality across your departments and product range
- Ensure timely product delivery
- Improve planning, increase production volume and grow your business

Our business processes are a lot more autonomous, month end is processed easily and accurately, we have better clarity with what is happening in the business and we can track our inventory with more precision.

Bob Zhou,

*Australian Dairy Park, Australia*

## Formula and Recipe Management

- Full formula and recipe scalability
- Percentage weight based recipes
- Yield planning and analysis
- Handle multiple units of measure within one recipe
- Choose how items are managed

## Making Complexity Simple

Designed to handle the most complex production processes, CompuTec ProcessForce allows you to drill down through each level of production, even when your final product contains dozens of sub-assemblies which each contain dozens of sub-assemblies and phantom items.

- Unlimited simultaneous product revisions
- Multi-level Bill of Materials
- Set up phantom items for better production planning
- Enforce rules for each stage
- Embed quality control tests and special manufacturing instructions
- Integrate work by subcontractors into your system
- Attach instructions, certifications and quality control procedures to each BoM to make sure your business stays compliant
- Mass item replace function
- Generate reports

Bill of Materials

Item Code

strawberry jam 200ml

Type

Internal

Description

strawberry jam 200ml

Revision

200ml

Quantity

1.000

Factor

1.000

Warehouse

01

Total

1.000

Yield

100.000

UoM Formula

Distribution Rules

Project

MSP Def.

Batch Size

1.000

Items		Coproducts		Scrap		Instructions		WIP Items		Attachments								
#	Sequence	Item Code	Description	Revision	Warehouse	UoM	Revision De...	Factor	Formula	Quantity	Scrap %	Yield	Result	Type	Subcontracting ...	Issue Type	Dimension 2	Batch Result
1	10	FD jar cap twist-off	FD jar twist-off	code00	01		default	1.000	=U_Quantity()*U_Factor()*Items.U_Factor(10)*Items.U_Quantity(10)*100/100	1.000	0.000	100.000	1.000	Buy	<input type="checkbox"/>	Backflush		1.000
2	20	FD jar 240ml	FD jar 240ml	code00	01		default	1.000	=U_Quantity()*U_Factor()*Items.U_Factor(20)*Items.U_Quantity(20)*100/100	1.000	0.000	100.000	1.000	Buy	<input type="checkbox"/>	Backflush		1.000
3	30	FD lemon acid	FD lemon acid	code00	01		default	1.000	=U_Quantity()*U_Factor()*Items.U_Factor(30)*Items.U_Quantity(30)*100/100	0.034	0.000	100.000	0.034	Buy	<input type="checkbox"/>	Backflush		0.034
4	40	FD pectin	FD pectin	code00	01		default	1.000	=U_Quantity()*U_Factor()*Items.U_Factor(40)*Items.U_Quantity(40)*100/100	0.055	0.000	100.000	0.055	Buy	<input type="checkbox"/>	Manual		0.055
5	50	FD sorbate	FD sorbate	code00	01		default	1.000	=U_Quantity()*U_Factor()*Items.U_Factor(50)*Items.U_Quantity(50)*100/100	0.079	0.000	100.000	0.079	Buy	<input type="checkbox"/>	Manual		0.079
6	60	FD Strawberry	FD Strawberry	code00	01		default	1.000	=U_Quantity()*U_Factor()*Items.U_Factor(60)*Items.U_Quantity(60)*100/100	0.500	0.000	100.000	0.500	Buy	<input type="checkbox"/>	Manual		0.500
7	70	Sugar	Sugar	code00	01	KG	default	1.000	=U_Quantity()*U_Factor()*Items.U_Factor(70)*Items.U_Quantity(70)*100/100	0.140	0.000	100.000	0.140	Buy	<input type="checkbox"/>	Manual		0.140
8	80	Water	Water	code00	01	LT	default	1.000	=U_Quantity()*U_Factor()*Items.U_Factor(80)*Items.U_Quantity(80)*100/100	0.090	0.000	100.000	0.090	Buy	<input type="checkbox"/>	Manual		0.090
9	90	Label-01	Label-01	code00	01	EA	default	1.000	=U_Quantity()*U_Factor()*Items.U_Factor(90)*Items.U_Quantity(90)*100/100	1.000	0.000	100.000	1.000	Buy	<input type="checkbox"/>	Backflush		1.000
10	0							0.000		0.000	0.000	100.000	0.000		<input type="checkbox"/>			0.000

Remarks

OK

Cancel

You Can Also



## Product Routings

CompuTec ProcessForce lets you assign routings to production items and bind specific items to each operation helping you to determine the best machines and equipment for each process and allowing you to consider the unique characteristics of each product revision in organizing workflow.

- Set up unlimited routings using a wide range of machinery and technology
- Assign alternative routings for when capacity is under strain
- Save time and reduce costs by setting up reusable sequences
- Make sure materials end up where they are needed exactly when they are needed

## Co-product, by-product, WIP items and scrap management

- Avoid unnecessary waste
- Maximize what you can re-use
- See new opportunities for profit

## Costed Bill of Materials (BoM)

- Ease the process of determining product costs
- Compare costs of different revisions
- Cost categories allow you to see how future costing changes will affect your business

Costed Bill of Materials																			
Item Code		Cost Category		TC Material		TC Resources		TC Fixed O/H		TC Variable O/H		TC Total		CC Batch Size					
Item Name		Standard cost		0.975		1.518		%		%		%		%					
Revision				59.783		93.084		%		%		%		%					
Warehouse				3.467		5.398		%		%		%		%					
Batch Size				0.000		0.000		%		%		%		%					
Routing				64.225		0.000		%		%		%		%					
Use the Final-Good batch:		<input type="checkbox"/>																	
#		Item Code	Item Name	Revision	Warehouse	Quantity	ATL Material	ATL Resources	ATL Fixed O/H	ATL Variable O/H	ATL Total	LL Material	LL Resources	LL Total	CA Material	CA Resources	CA Total	TC Material	TC Resources
1	Good	Bioethanol	Bioethanol	code00	01	1.000	0.975	59.783	3.467	0.000	64.225	0.000	0.000	0.000	0.000	0.000	0.000	0.975	59.783
2	Material	Sugar Cane	Sugar Cane	code00	01	4.000	0.000	0.000	0.000	0.000	0.000	0.000	0.000	0.000	0.000	0.000	0.000	0.000	0.000
3	Material	Active-Item-03	Active-Item-03	rev01	01	0.140	0.420	0.000	0.000	0.000	0.420	0.000	0.000	0.000	0.000	0.000	0.000	0.420	0.000
4	Material	Active-Item-05	Active-Item-05	rev01	01	0.555	0.555	0.000	0.000	0.000	0.555	0.000	0.000	0.000	0.000	0.000	0.000	0.555	0.000
5	Material	Active-Item-06	Active-Item-06	code00	01	0.822	0.000	0.000	0.000	0.000	0.000	0.000	0.000	0.000	0.000	0.000	0.000	0.000	0.000
6	Product	Liquid CO2	Liquid CO2	code00	01	0.120												0.000	0.000
7		Item-A	Item-A	code00	01	0.090												0.000	0.000
8	ing	fuel bat	fuel bat					14.783	3.517	0.500									
9	ation	grinding	grinding					2.083	0.010	0.100									
10	urce	06	Labour					1.000	0.010	0.100									
11	is			Queue Time		0:00:00.000		0.000	0.000	0.000									
12	is			Setup Time		0:00:00.000		0.000	0.000	0.000									
13	is			Run Time		1:00:00.000		1.000	0.010	0.100									
14	is			Stock Time		0:00:00.000		0.000	0.000	0.000									
15	urce	BE01	BE01					1.083	0.000	0.000									
16	is			Queue Time		0:00:00.000		0.000	0.000	0.000									
17	is			Setup Time		0:15:00.000		0.750	0.000	0.000									
18	is			Run Time		0:05:00.000		0.333	0.000	0.000									
19	is			Stock Time		0:00:00.000		0.000	0.000	0.000									
20	ation	fermentation	fermentation					4.500	0.010	0.100									
21	urce	BE02	BE02					3.500	0.000	0.000									
22	is			Queue Time		0:00:00.000		0.000	0.000	0.000									
23	is			Setup Time		0:10:00.000		0.500	0.000	0.000									
24	is			Run Time		1:00:00.000		3.000	0.000	0.000									
25	is			Stock Time		0:00:00.000		0.000	0.000	0.000									
26	urce	06	Labour					1.000	0.010	0.100									
27	is			Queue Time		0:00:00.000		0.000	0.000	0.000									
28	is			Setup Time		0:00:00.000		0.000	0.000	0.000									
29	is			Run Time		1:00:00.000		1.000	0.010	0.100									
30	is			Stock Time		0:00:00.000		0.000	0.000	0.000									
31	ation	distillation	distillation					3.917	0.010	0.100									
32	urce	BE03	BE03					2.917	0.000	0.000									
33	is			Queue Time		0:00:00.000		0.000	0.000	0.000									
34	is			Setup Time		0:25:00.000		2.083	0.000	0.000									
35	is			Run Time		0:10:00.000		0.833	0.000	0.000									





# SCHEDULING

CompuTec ProcessForce's scheduling solution provides you with all the tools you need to manage time and resource limitations and ensure that the final products reach your customers on time.

- Allocate resources, tooling and labor according to:
  - Resource status and capacity
  - Time constraints
  - Overlapping processes
- Forwards and backwards production scheduling
- Set timings for each stage of production
- Manage your production calendar and calculate resource and production capacities with precision
- Manage Manufacturing Orders based on complex Multi-level Bills of Materials with ease
- Define alternative product routings when necessary
- Manage advanced relations between processes
- Record material consumption for all operations

## THE SCHEDULING BOARD

A simple but effective planning tool presented in table format.

- Manage production dates, scheduling methods, priorities, completion dates and more
- Straightforward data organization and management with advanced filtering options
- Oversee changes and see how they affect production scheduling
- View scheduling for all levels of multi-level Bills of Materials

## RESOURCE PLANNING BOARD

- Filter and sort Manufacturing Orders and review details of each one
- Manage resources and resource groups and the Manufacturing Orders associated with them
- Check resource capacity
- View and organize the jobs which are waiting for resources to become available
- Manage and assign tools to specific resources
- Receive alternative resource suggestions
- Easy to use drag and drop interface

## DYNAMIC GANTT CHART

- Easy to modify and reschedule tasks via drag and drop
- Extensive filtering and sorting options
- Intuitive interface e.g. color-coded work time display
- Monitor the details of each order
- Plan immediate and long-term future operations
- Display current status, relevant historical data and pending tasks for each resource
- Spread orders across multiple resources
- Identify overloaded assets and receive system recommendations about alternative resources
- Manage interruptions to the manufacturing process to facilitate continuous production
- Receive notifications of holdups due to material shortages
- "Lock" set tasks into designated time periods
- Block all Manufacturing Orders
- See the knock-on effects of changes to the Gantt Chart across your operations

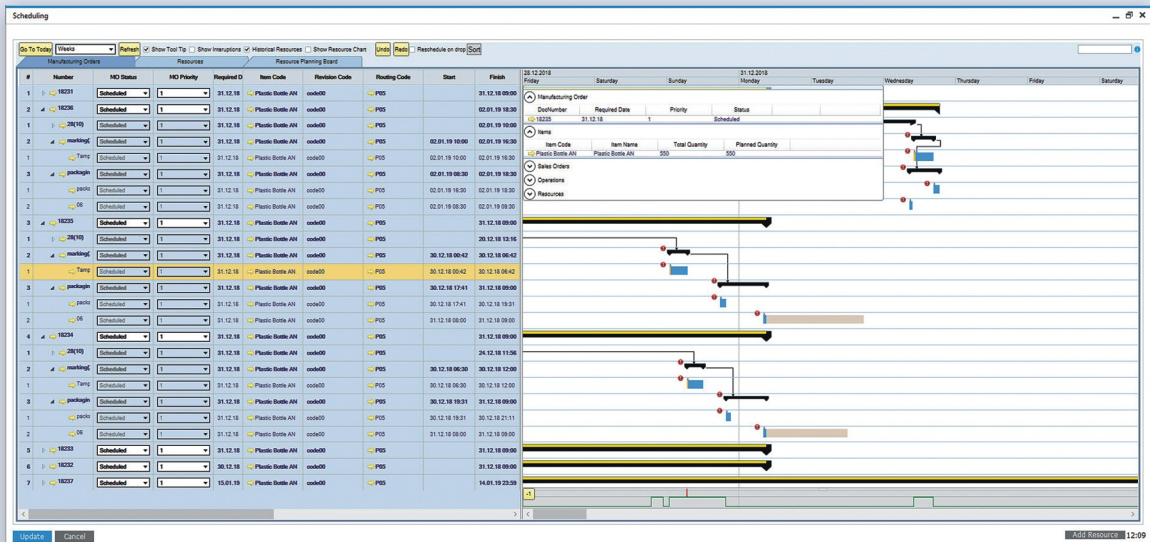
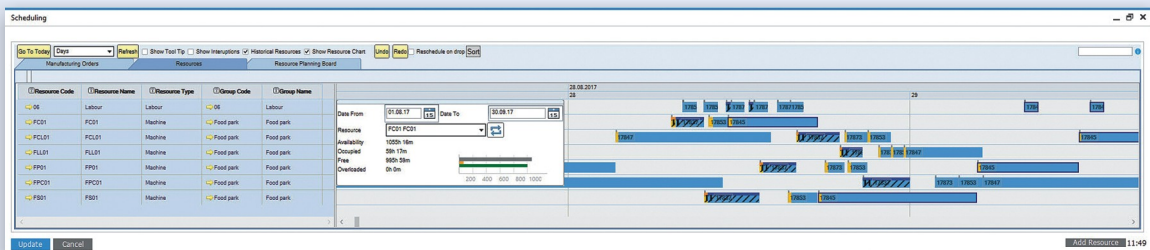
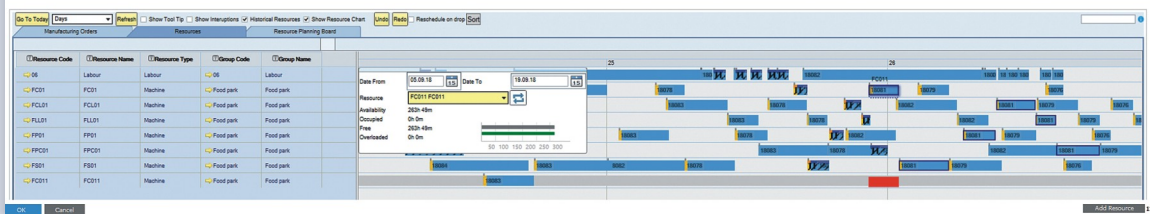
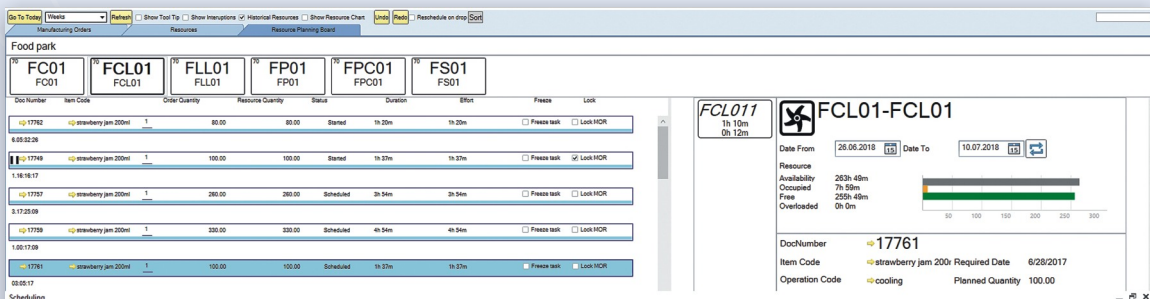
## PLANNING USING RELATIONSHIPS

- Initiate work on Manufacturing Orders when you are sure all the pieces are in place
- Prioritize urgent or important orders
- Monitor the relationships between various stages of the production process
- Schedule Manufacturing Orders so they are completed according to customer agreements
- Identify scheduling conflicts immediately as they arise.

CompuTec ProcessForce will send users alerts and warnings when production capacity is exceeded or delivery times cannot be met. The nearest possible delivery date will be calculated too.



Order No.	Level	Series	Doc No.	Doc Entry	Item Code	Revision	Warehouse	Quantity	InStock	Direction	Priority	Schedule Date	Committed	Status	Start Date	Ordered	End Date	Absolute Time	Required Date	Routing	Delivery Date	Delivery
0	HMB	17749	3415	0	strawberry jam 200ml	000000	01	100.000	867.000	Backward	▼	21.06.17	26.160.000	Started	20.06.17 14:59	20.06.000	21.06.17 00:00	09:01:00	21.06.17	Foodgum	21.06.17	00:00
0	HMB	17762	3430	0	strawberry jam 200ml	000000	01	80.000	867.000	Forward	▼	14.06.17	26.160.000	Started	14.06.17 08:55	20.06.000	14.06.17 16:19	7:24:00	29.06.17	Foodgum	29.06.17	00:00
0	HMB	17837	3536	0	strawberry jam 200ml	000000	01	200.000	867.000	Backward	▼	29.08.17	26.160.000	Started	28.08.17 07:12	20.06.000	29.08.17 00:00	16:48:00	29.08.17	Foodgum	29.08.17	00:00
0	HMB	17869	3615	0	strawberry jam 200ml	000000	01	100.000	867.000	Backward	▼	31.10.17	26.160.000	Started	30.10.17 13:29	20.06.000	31.10.17 22:29	8:05:00	31.10.17	Foodgum	31.10.17	00:00
0	HMB	17865	3600	0	strawberry jam 200ml	000000	01	75.000	867.000	Backward	▼	09.11.17	26.160.000	Scheduled	31.10.17 23:45	20.06.000	09.11.17 00:00	19:21:40	09.11.17	Foodgum	09.11.17	00:00
0	HMB	17876	3587	0	strawberry jam 200ml	000000	01	120.000	867.000	Backward	▼	26.10.17	26.160.000	Scheduled	25.10.17 13:26	20.06.000	26.10.17 00:00	10:34:00	26.10.17	Foodgum	26.10.17	00:00
0	HMB	17751	3417	0	strawberry jam 200ml	000000	01	55.000	867.000	Backward	▼	29.06.17	26.160.000	Scheduled	28.06.17 18:28	20.06.000	29.06.17 00:00	0:31:00	29.06.17	Foodgum	29.06.17	00:00
0	HMB	17753	3419	0	strawberry jam 200ml	000000	01	70.000	867.000	Backward	▼	28.06.17	26.160.000	Scheduled	27.06.17 17:19	20.06.000	28.06.17 00:00	6:41:00	28.06.17	Foodgum	28.06.17	00:00
0	HMB	17755	3421	0	strawberry jam 200ml	000000	01	110.000	867.000	Backward	▼	29.06.17	26.160.000	Scheduled	28.06.17 11:59	20.06.000	29.06.17 00:00	9:47:00	29.06.17	Foodgum	29.06.17	00:00
0	HMB	17757	3423	0	strawberry jam 200ml	000000	01	160.000	867.000	Backward	▼	22.06.17	26.160.000	Scheduled	22.06.17 02:32	20.06.000	23.06.17 00:00	1:28:00	23.06.17	Foodgum	23.06.17	00:00
0	HMB	17759	3425	0	strawberry jam 200ml	000000	01	330.000	867.000	Backward	▼	27.06.17	26.160.000	Scheduled	23.06.17 21:05	20.06.000	27.06.17 00:00	7:54:00	27.06.17	Foodgum	27.06.17	00:00
0	HMB	17761	3429	0	strawberry jam 200ml	000000	01	100.000	867.000	Backward	▼	28.06.17	26.160.000	Scheduled	27.06.17 10:23	20.06.000	28.06.17 00:00	10:26:00	28.06.17	Foodgum	28.06.17	00:00
0	HMB	17823	3544	0	strawberry jam 200ml	000000	01	80.000	867.000	Backward	▼	06.11.17	26.160.000	Scheduled	31.10.17 21:17	20.06.000	06.11.17 00:00	12:43:00	06.11.17	Foodgum	07.11.17	00:00
0	HMB	17826	3564	0	strawberry jam 200ml	000000	01	45.000	867.000	Backward	▼	29.12.17	26.160.000	Scheduled	28.12.17 14:12	20.06.000	28.12.17 22:19	8:07:00	29.12.17	Foodgum	29.12.17	00:00
0	HMB	17835	3534	0	strawberry jam 200ml	000000	01	120.000	867.000	Backward	▼	20.08.17	26.160.000	Scheduled	18.08.17 13:26	20.06.000	18.08.17 23:59	10:34:00	20.08.17	Foodgum	21.08.17	00:00
0	HMB	17867	3502	0	strawberry jam 200ml	000000	01	80.000	867.000	Backward	▼	25.04.18	26.160.000	Started	25.04.18 15:55	20.06.000	25.04.18 00:00	8:04:48	25.04.18	Foodgum	26.04.18	00:00
0	HMB	18077	3584	0	strawberry jam 200ml	000000	01	150.000	867.000	Backward	▼	22.08.17	26.160.000	Scheduled	21.08.17 11:05	20.06.000	22.08.17 00:00	12:55:00	22.08.17	Foodgum	22.08.17	00:00
0	HMB	17841	3540	0	strawberry jam 200ml	000000	01	175.000	867.000	Backward	▼	31.08.17	26.160.000	Scheduled	30.08.17 05:00	20.06.000	30.08.17 19:49	14:49:00	31.08.17	Foodgum	31.08.17	00:00
0	HMB	17843	3542	0	strawberry jam 200ml	000000	01	1.500.000	867.000	Backward	▼	12.09.17	26.160.000	Scheduled	05.09.17 02:06	20.06.000	12.09.17 00:00	1:05:54:00	12.09.17	Foodgum	12.09.17	00:00
0	HMB	17847	3546	0	strawberry jam 200ml	000000	01	750.000	867.000	Backward	▼	31.08.17	26.160.000	Scheduled	24.08.17 20:49	20.06.000	29.08.17 17:33	11:02:00	31.08.17	Foodgum	31.08.17	00:00
0	HMB	17849	3548	0	strawberry jam 200ml	000000	01	1.250.000	867.000	Backward	▼	30.08.17	26.160.000	Scheduled	22.08.17 08:21	20.06.000	28.08.17 10:49	14:28:00	30.08.17	Foodgum	30.08.17	00:00
0	HMB	17845	3544	0	strawberry jam 200ml	000000	01	600.000	867.000	Backward	▼	31.08.17	26.160.000	Started	28.08.17 11:10	20.06.000	30.08.17 11:04	47:56:00	31.08.17	Foodgum	31.08.17	00:00
0	HMB	17853	3554	0	strawberry jam 200ml	000000	01	100.000	867.000	Backward	▼	09.08.17	26.160.000	Scheduled	28.08.17 09:50	20.06.000	29.08.17 05:03	19:13:00	30.08.17	Foodgum	30.08.17	00:00
0	HMB	17855	3556	0	strawberry jam 200ml	000000	01	300.000	867.000	Forward	▼	09.08.17	26.160.000	Released	09.08.17 06:40	20.06.000	21.08.17 08:44	20:04:00	21.08.17	Foodgum	21.08.17	00:00
0	HMB	18085	3563	0	strawberry jam 200ml	000000	01	250.000	867.000	Backward	▼	02.05.18	26.160.000	Scheduled	01.05.18 03:18	20.06.000	02.05.18 00:00	20:42:00	02.05.18	Foodgum	02.05.18	00:00
0	HMB	17873	3581	0	strawberry jam 200ml	000000	01	100.000	867.000	Backward	▼	31.08.17	26.160.000	Scheduled	25.08.17 16:41	20.06.000	29.08.17 03:23	82:42:00	31.08.17	Foodgum	31.08.17	00:00
0	HMB	18121	3518	0	strawberry jam 200ml	000000	01	100.000	867.000	Backward	▼	28.06.18	26.160.000	Scheduled	27.06.18 14:59	20.06.000	28.06.18 00:00	0:01:00	28.06.18	Foodgum	28.06.18	00:00
0	HMB	17901	3620	0	strawberry jam 200ml	000000	01	100.000	867.000	Backward	▼	29.11.17	26.160.000	Scheduled	28.11.17 14:59	20.06.000	29.11.17 00:00	0:01:00	29.11.17	Foodgum	29.11.17	00:00
0	HMB	18116	3512	0	strawberry jam 200ml	000000	01	350.000	867.000	Backward	▼	21.06.18	26.160.000	Started	19.06.18 19:33	20.06.000	21.06.18 00:00	28:27:00	21.06.18	Foodgum	21.06.18	00:00
0	HMB	17889	3504	0	strawberry jam 200ml	000000	01	180.000	867.000	Backward	▼	16.11.17	26.160.000	Scheduled	31.10.17 17:58	20.06.000	10.11.17 00:00	22:02:00	10.11.17	Foodgum	10.11.17	00:00
0	HMB	17907	3597	0	strawberry jam 200ml	000000	01	40.000	867.000	Backward	▼	31.10.17	26.160.000	Released	30.10.17 19:38	20.06.000	31.10.17 00:00	4:22:00	31.10.17	Foodgum	31.10.17	00:00
0	HMB	17851	3550	0	strawberry jam 200ml	000000	01	5.500.000	867.000	Forward	▼	01.11.17	26.160.000	Scheduled	01.11.17 00:51	20.06.000	24.11.17 22:05	57:13:32	31.08.17	Foodgum	31.08.17	00:00
0	HMB	17891	3608	0	strawberry jam 200ml	000000	01	159.000	867.000	Backward	▼	08.11.17	26.160.000	Scheduled	31.10.17 14:43	20.06.000	08.11.17 00:00	177:16:24	08.11.17	Foodgum	08.11.17	00:00
0	HMB	17868	3508	0	strawberry jam 200ml	000000	01	75.000	867.000	Backward	▼	08.11.17	26.160.000	Scheduled	31.10.17 12:37	20.06.000	03.11.17 21:14	05:11:37	06.11.17	Foodgum	06.11.17	00:00
0	HMB	17895	3610	0	strawberry jam 200ml	000000	01	220.000	867.000	Backward	▼	09.11.17	26.160.000	Scheduled	31.10.17 08:49	20.06.000	08.11.17 21:04	20:15:00	09.11.17	Foodgum	09.11.17	00:00
0	HMB	17897	3612	0	strawberry jam 200ml	000000	01	150.000	867.000	Backward	▼	16.11.17	26.160.000	Released	31.10.17 05:39	20.06.000	09.11.17 19:22	229:43:00	10.11.17	Foodgum	10.11.17	00:00
0	HMB	17902	3618	0	strawberry jam 200ml	000000	01	100.000	867.000	Backward	▼	29.11.17	26.160.000	Released	29.11.17 21:12	20.06.000	30.11.17 00:00	2:48:00	30.11.17	Foodgum	30.11.17	00:00
0	HMB	17902	3621	0	strawberry jam 200ml	000000	01	20.000	867.000	Backward	▼	30.11.17	26.160.000	Released	29.11.17 21:12	20.06.000	30.11.17 00:00	2:48:00	30.11.17	Foodgum	30.11.17	00:00
								20.930.000														





# MANUFACTURING ORDERS

CompuTec ProcessForce's Manufacturing Order gives you meticulous control over planning, executing and recording production activities and provide you with the tools you need to make sure your factory is running efficiently and you meet the delivery dates you have promised.

- Order dependent recipes and routings
  - Modify product structures and production processes to manage everyday changes in production
- Backwards and forwards scheduling
  - Plan production start and end dates
  - Accurate lead time calculation
  - Strategic order prioritization
- Wide-range of document creation options
  - Issue to Production
  - Receipt from Production
  - Stock Transfer documents
- Register co-products as they are manufactured
- Comprehensive usable and technological scrap management tools
- Control document workflow and task progress using the CompuTec ProcessForce relationship map
- Create large Manufacturing Orders based on multiple Sales Orders
- Manage and optimize warehouse movements
  - Check availability of materials and component parts
  - Receive alerts when shortages occur
  - Gain insights into picking and receiving processes
- Subcontracting management features:
  - Define your suppliers and specify the scope of their service
  - Generate Purchase Requests or Purchase Orders for services
  - Procurement and material reports
- Record worktime – enhanced functionality when used in conjunction with CompuTec PDC (Plant Data Capture)
- Set up quality control testing rules according to customer requirements
- Oversee the relationships between all the operations associated with a particular manufacturing order
- Use the operation bind to ensure the correct materials are issued to each operation
- Initiate orderless production
  - Use statistical data and projections to plan production
  - Spread out production evenly to avoid bottlenecks and backlogs
  - Track cost details throughout the entire process



Manufacturing Order

Item Code

Pipe pliers

Type

Internal

Item Name

Tool Pipe pliers

Revision

P6622

Warehouse

01

UoM

Planned Quantity

35.000

Actual Quantity

0.000

Series

MBG

13700

Status

Started

Routing

hand tool

Required Date

29.06.17

00:00

Planned Start Date

18.05.17

09:00

Planned End Date

01.07.17

13:49

Items	Coproducts	Scrap	Instructions	WIP Items	Operations	Others	Documents	Sales Orders	Attachments										
<div> <div>Operations</div> <div> <div>Operation Properties</div> <div>Resource Properties</div> <div>Instructions</div> </div> </div>																			
#	Sequence	Operation Code	Operation Name	Operation Status	Remarks	Overlap Seq	Test Protocol No	Overlap Operation	Has Advanced Relation	Overlap Amount	Ignore Yield	Operation Start Time	Operation End Time	Total Time	Origin	Advanced Relation Type	Quantity	QC Active	Force Order
1	10	100	Cutting	Started						0.000		18/05/17 09:00	18/05/17 11:35	2:35:00	BOM	NO	0.000		
2	20	101	blending	Started						0.000		18/05/17 11:35	18/05/17 11:35	0:00:00	BOM	NO	0.000		
3	30	102	drilling	Started						0.000		29/06/17 16:13	30/06/17 16:33	24:20:00	BOM	NO	0.000		
4	40	103	mounting	Started						0.000		30/06/17 21:23	01/07/17 11:58	14:35:00	BOM	NO	0.000		
5	50	marking	marking	Started						0.000		01/07/17 11:58	01/07/17 12:49	0:51:00	BOM	NO	0.000		
6	60	packaging	packaging	Started						0.000		01/07/17 12:49	01/07/17 13:49	1:00:00	BOM	NO	0.000		
7	0		Not started							0.000					BOM	NO	0.000		

Resource Code	Resource Name	Resource Type	Issue Type	Machine Code	Machine Line Num	Number of Resources	Resource Quantity	Has Cycles	Cycle Capacity	Setup Time	Setup Rate	Run Time	Run Rate	Run Time Cost	Run Time Fixed Cost	Run Time Variable Cost
100	cutting	Manual	Manual		0	1	35.000		1.000	2.000	Fixed Hours	1.000	Minutes Per Piece	0.000	6.000	0.000
06	Labour	Labour	Manual		0	1	35.000		1.000	0.000	Fixed Minutes	60.000	Fixed Minutes	10.000	1.000	1.000
	Machine	Machine	Manual		0	0	0.000		1.000	0.000	Fixed Minutes	0.000	Fixed Minutes	0.000	0.000	0.000

Remarks

Journal Remarks

Close Date

OK

Cancel

Costed Manufacturing Order														
Series and document		MBG	18184											
Item Code		Bioethanol												
Item Name		Bioethanol												
Revision		code02												
Routing		fuel tst												

Planned:		Quantity	500.000	Actual:		Quantity	500.000	Variance:		Quantity	0.000
		Material Cost	819.500			Material Cost	4,577.820			Material Cost	-3,758.320
		Material Fixed O/H	0.000			Material Fixed O/H	0.000			Material Fixed O/H	0.000
		Material Variable O/H	0.000			Material Variable O/H	0.000			Material Variable O/H	0.000
		Resource Cost	779.917			Resource Cost	779.917			Resource Cost	0.000
		Resource Fixed O/H	70.050			Resource Fixed O/H	70.050			Resource Fixed O/H	0.000
		Resource Variable O/H	0.500			Resource Variable O/H	0.500			Resource Variable O/H	0.000
		Total Cost	1,669.967			Total Cost				Total Cost	

Planned/Actual Material Costs			Planned/Actual Resource Costs													
#	Operation	Status	Resource	Resource Time Type	Planned Time	Actual Time	Variance Time	Planned Cost	Actual Cost	Variance Cost	Planned Fixed O/H Cost	Actual Fixed O/H Cost	Variance Fixed O/H Cost	Planned Variable O/H Cost	Actual Variable O/H Cost	Variance...
1	grinding - grinding	Started	BE01 - BE01					167.417	167.417	0.000	0.000	0.000	0.000	0.000	0.000	0.000
2				Queue Time	0:00:00		0:00:00.000	0.000	0.000	0.000	0.000	0.000	0.000	0.000	0.000	0.000
3				Run Time	41:40:00	41:40:00	0:00:00.000	166.667	166.667	0.000	0.000	0.000	0.000	0.000	0.000	0.000
4				Setup Time	0:15:00	0:15:00	0:00:00.000	0.750	0.750	0.000	0.000	0.000	0.000	0.000	0.000	0.000
5				Stock Time	0:00:00		0:00:00.000	0.000	0.000	0.000	0.000	0.000	0.000	0.000	0.000	0.000
6	grinding - grinding	Started	06 - Labour					1.000	1.000	0.000	0.010	0.010	0.000	0.000	0.100	0.100
7				Queue Time	0:00:00		0:00:00.000	0.000	0.000	0.000	0.000	0.000	0.000	0.000	0.000	0.000
8				Run Time	1:00:00	1:00:00	0:00:00.000	1.000	1.000	0.000	0.010	0.010	0.000	0.000	0.100	0.100
9				Setup Time	0:00:00		0:00:00.000	0.500	0.500	0.000	0.000	0.000	0.000	0.000	0.000	0.000
10				Stock Time	0:00:00		0:00:00.000	0.000	0.000	0.000	0.000	0.000	0.000	0.000	0.000	0.000
11	fermentation - fermentat	Started	BE02 - BE02					3.500	3.500	0.000	0.000	0.000	0.000	0.000	0.000	0.000
12				Queue Time	0:00:00		0:00:00.000	0.000	0.000	0.000	0.000	0.000	0.000	0.000	0.000	0.000
13				Run Time	1:00:00											



# BATCH CONTROL

With the help of CompuTec ProcessForce's batch management functions, you'll be able to track exactly who you bought inventory from, who you sold it to and everything that happened to it in-between making your life easier in terms of quality control, efficiency of workflow and customer relations.

- Batch consumption management
- Batch distribution management
- Access detailed data about each and every batch at the click of a button
- Batch transaction reports to trace all batch related documents and transactions

## Expanded Batch Master Data

CompuTec ProcessForce's Batch Master Data keeps records of all the respective data your business needs.

- Date details e.g. admission, manufacture, expiry and inspection dates
- Properties e.g. physical or chemical definitions and nutritional information
- Quality control data
- Returns and complaints associated with each batch
- Custom fields to serve your business needs
- Set up batch templates to simplify and speed up batch creation

## Batch and Serial Number management

Fully customizable batch and serial number generation tools mean that you can build the exact serial and batch numbers that you want in whatever format you want. You can use any information in your SAP Business One database, your own-predefined codes and system generated numbers and changing your set-up takes just a few minutes.

## Shelf -Life management

- Optimize your picking methods
- Limit spoilage and deterioration of perishable goods
- Avoid costly returns and spoiled stock

Expiry dates play a huge role in consumer purchase decisions. By tightening up your shelf-life management procedures the retailers that you supply will have more lead time on the expiration dates of your products, helping them in turn to shift more product and most importantly boost your sales orders.

- Manage each batch on a FIFO, FEFO or FMFO basis
- Color coded expiry date warning system
- Customizable system alerts
- Advanced expiry date calculation engine
- Integrate minimum guaranteed shelf-life agreements into your system





# BATCH TRACEABILITY

While inventory transparency is mandatory in almost every industry these days, entering and maintaining this kind of data manually is time-consuming and prone to errors. Using the CompuTec ProcessForce end-to-end Batch Traceability features, you can trace any batch throughout its entire lifecycle from its arrival at your production facility, through the production process to the final goods delivery to your customer with speed and accuracy to keep up with the demands of even the most heavily regulated industries.

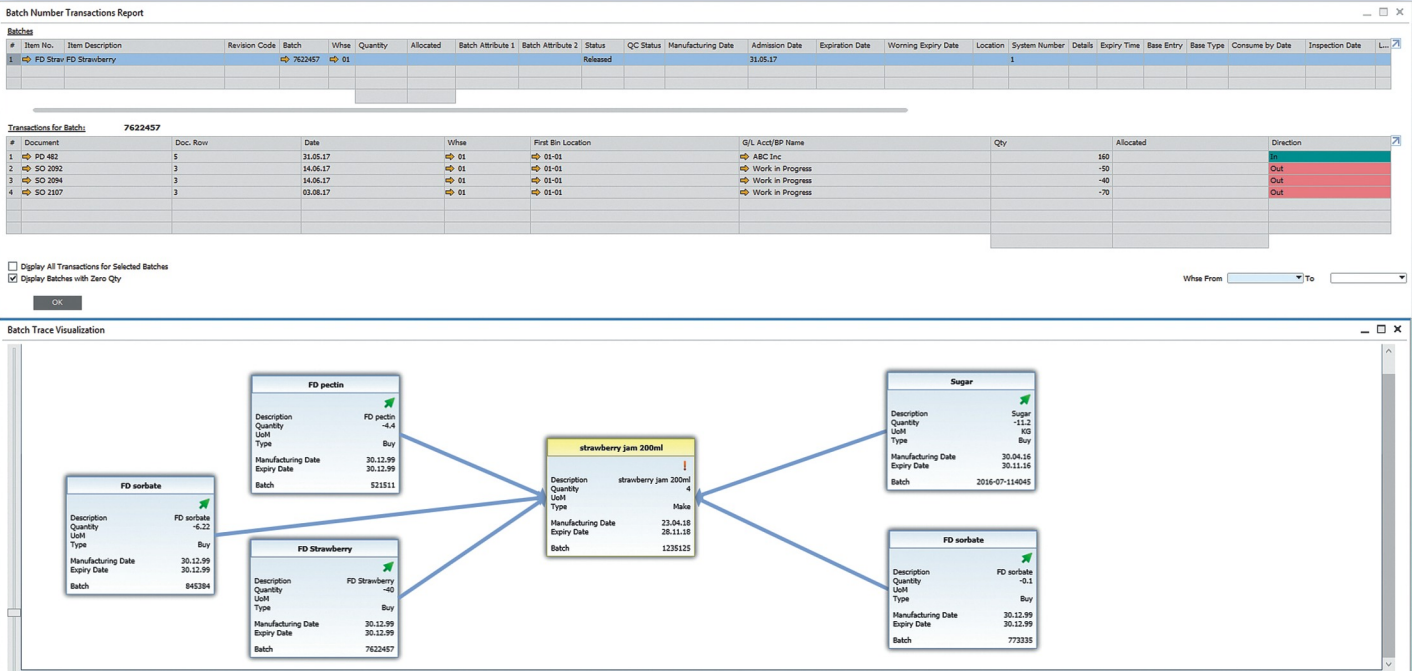
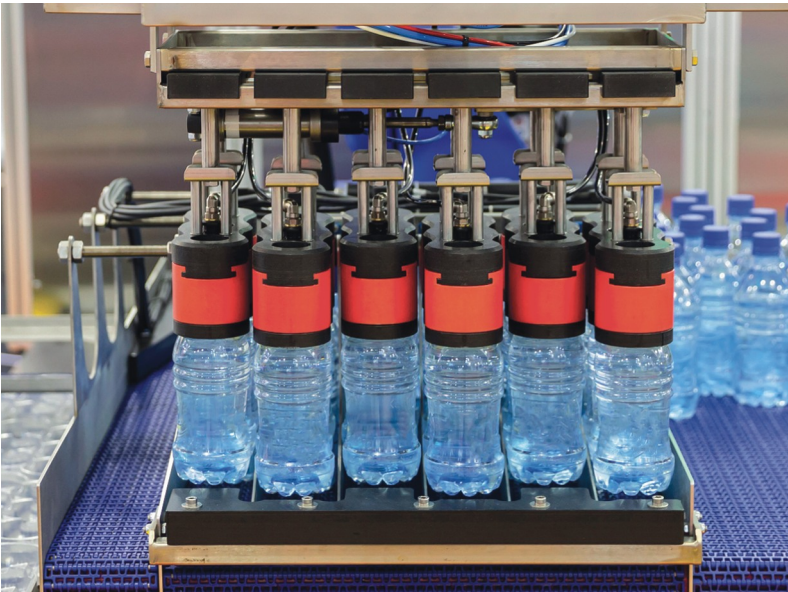
- Withdraw inventory from the supply chain with ease
- Follow up complaints efficiently
- Monitor and trace allergens and hazardous materials
- Pinpoint the root cause of quality control issues
- Identify your best and worst suppliers
- Gain control over final product quality
- Support product aftercare, upgrade customer service and issue warranties with confidence

## Batch Genealogy Trees

- Visualize your inventory's journey from start to finish
- Use any stage of the product lifecycle as a starting point
- Full batch history
- View complex product relationships

*In order to ensure compliance with industry regulations and standards, our inventory needs to be fully traceable at any given moment and the bigger we get, the more complex that becomes. CompuTec ProcessForce has taken the hassle out of that whole process and eliminated that particular barrier to our company's growth.*

*Jaymie Crook,  
Bosco and Roxy's, Canada*



# END-TO-END QUALITY MANAGEMENT

Today consumers are more demanding than ever before. There is no space for mistakes in today's fast-paced market which is why we designed CompuTec ProcessForce to provide a robust infrastructure for Quality Control at every stage of production, from the moment the goods arrive in your facility to the moment the final product is loaded onto the delivery vehicle.

## Quality Control throughout the entire product life cycle

- In-bound testing upon receipt to the warehouse including Delivery Vehicle Inspection
- In-process testing during each phase of the production cycle
- Inventory testing including batch re-testing and other pre-dispatch checks

## Quality Control Management tools

- Use business events, customizable triggers and SAP Business One Alert functions to advise users that a Quality Control Test is required to be performed.
- Automatic Quality Control test form generation on user-defined transactions and Manufacturing Order status changes
- Manage tests individually or in test pools (perform the same test on multiple samples)
- Test creation wizard which ensures no test gets missed
- View existing Quality Control tests by Manufacturing Order
- Define resources and tools to be used for testing and monitor consumption of materials used for Quality Control testing
- Specify even very complex testing rules and procedures as well as testing frequency
- Stipulate additional requirements and manage them using User-Defined Fields
- Designate Quality Control inspectors according to specialization, warehouse or accreditation

## Customizable test result management

- Define test properties and defects
- Record multiple test results for each Quality Control test
- Assign test property and defect codes
- Manage batch or serial number status throughout the Quality Control process
- Group test results
- Track frequency of specific quality control passes and fails for reporting and analysis purposes

## Fully integrated Compliance Management

according to the regulations of the FDA, EFSA, FSANZ, ECHA, EPA or any other regulatory body.

## Generate Non-Conforming Materials Reports

- Record additional data about test failures
- Initiate action plans to remedy or determine the cause of failed Quality Control tests

## Certificate of Analysis

- Confirms that each product meets all regulations and requirements
- Fully customizable according to each customer's needs
- Send Certificate of Analysis to your customers automatically



## WHAT

Test and Item Properties to be tested

## WHEN

The frequency of testing

## WHERE

The transaction the test will be performed on

## WITH

The resources and items that are used within the testing process

Test Protocol

Code: Bot\_tst1  
Item Code: Plastic Bottle AN  
Item Name: Plastic Bottle AN  
UoM: pcs  
Revision Code: code00  
QC Warehouse Cc: 01  
QC Bn Code: 01-01  
Project: Cage01  
Used Count: 1

Name: bottst  
Template Code: 01  
Template Name: Inline Testng  
Group Name: Standard Products  
Valid from: 27.03.17  
Valid to: 28.03.23  
Create Date: 23.11.18  
Update Date: 23.11.18

#	Item Property Code	Item Property Name	Expression	Value from	Value to	UoM	Reference Code	Reference Name	Remarks
1	06	Appearance	Equals	1.000	2.000				
2	07	Colour	Between	0.000	1.000		02	Red	
3	12	Grade	Equals	1.000	2.000		15	A	
4	18	Length	Between	120.000	124.000	mm			
5	13	Weight	Between	35.000	37.000	G/m			
6	15	Width	Between	55.000	60.000	mm			
7				0.000	0.000				

Update Cancel

17.01.19 16:28

SAP Business One

Quality Control Test

Test Protocol No.: Bot\_tst  
Description: bottst  
Item Code: Plastic Bottle AN  
Item Name: Plastic Bottle AN  
Item UoM: pcs  
Revision Code: code00  
QC Warehouse Cc: 01  
QC Bn Code: 01-01  
Complaint No.:  
Project: Cage01  
Sample Id: 34114141  
Used Count: 1

Series: Primary 438  
QC Pool No.:  
Inspector: Mark Jones  
Electronic Signatu: Created  
Status: Created  
Created Date: 17.01.19  
Started Date: 17.01.19  
On-Hold Date:  
Waiting WCHR Dat:  
Closed Date:  
Test Status: To Be Determined  
Pass/Fail Date:

#	Item Property Code	Item Property Name	Expression	Value from	Value to	UoM	Tested Value	Reference Code	Reference Name	Tested Reference Code	Tested Reference Name	Pass/Fail	Reason Code
1	06	Appearance	Equals	1.000	2.000		1.000	06	Oily			Pass	
2	07	Colour	Between	0.000	1.000		1.000	02	Red			Pass	
3	12	Grade	Equals	1.000	2.000		1.500	15	A			Pass	
4	18	Length	Between	120.000	124.000	mm	0.000					Fail	
5	13	Weight	Between	35.000	37.000	G/m	0.000					Fail	
6	15	Width	Between	55.000	60.000	mm	0.000					Fail	
7				0.000	0.000		0.000						

Add Cancel

You Can Also

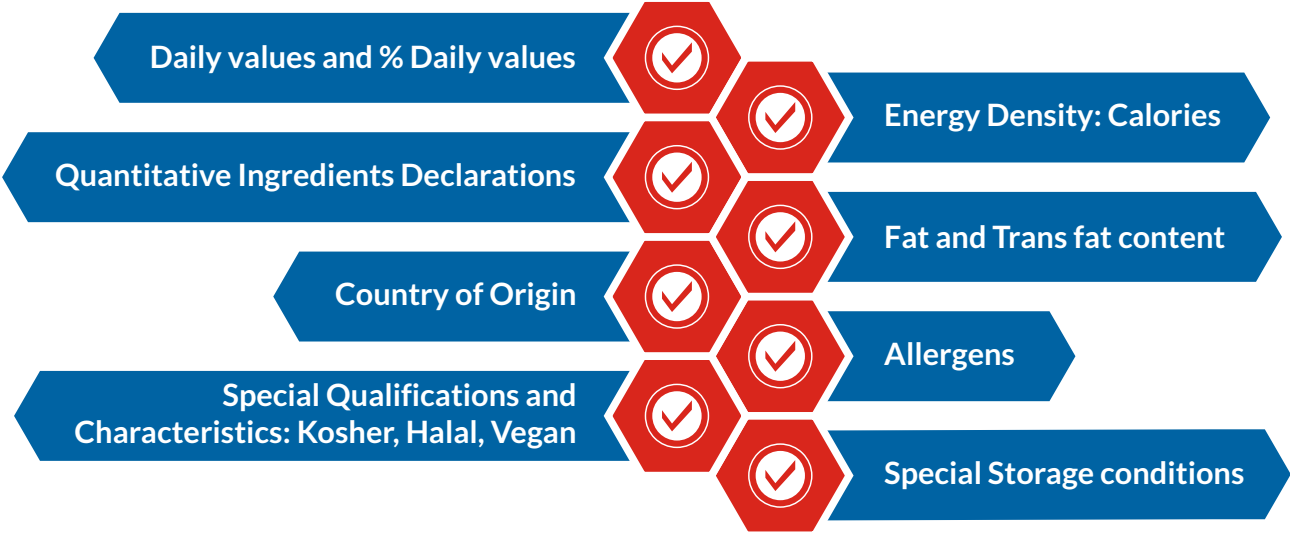
The incredibly useful scheduling module, extensive quality control management features and improved structure for the production process are all highly praised by our customers.

Halim Madid  
Innov Business Services, France & Tunisia



# INGREDIENTS CALCULATION AND DECLARATION

To avoid the dire consequences of incorrectly and insufficiently labelled products in regulated industries, CompuTec ProcessForce makes sure you know exactly what is in each of your final products and you can declare ingredients with confidence and accuracy.



CompuTec ProcessForce is the only solution on the market that offers the detailed functionalities required by the food and beverage industry whilst being both a solution that is native to SAP Business One and easy to implement and use.

Lindsay Pointon  
Signum Solutions, United Kingdom

- Calculate nutrients, allergens and contaminants on any item, formula or Bill of Materials
- Base calculations on default sample sizes, serving sizes or containers
- Integrate adherence to regulatory standards into your production processes
- Assign codes in accordance with regulations
- Define alternative code – common, scientific or Codex Alimentarius INS or EAU numbers
- Make factual health and nutritional claims

**Additional features for CompuTec Labels users:**

- Install templates for rapid data entry and label creation
- Customizable product labeling e.g. free-from labeling such as GM Free, Sugar Free, Dairy Free, Gluten Free etc.

Nutrition Facts	
8 servings per container	
<b>Serving size</b>	<b>2/3 cup (55g)</b>
<b>Amount per serving</b>	
<b>Calories</b>	<b>230</b>
<b>% Daily Value*</b>	
<b>Total Fat</b> 8g	<b>10%</b>
Saturated Fat 1g	<b>5%</b>
Trans Fat 0g	
<b>Cholesterol</b> 0mg	<b>0%</b>
<b>Sodium</b> 160mg	<b>7%</b>
<b>Total Carbohydrate</b> 37g	<b>13%</b>
Dietary Fiber 4g	<b>14%</b>
Total Sugars 12g	
Includes 10g Added Sugars	<b>20%</b>
<b>Protein</b> 3g	
Vitamin D 2mcg	10%
Calcium 260mg	20%
Iron 8mg	45%
Potassium 235mg	6%
<small>* The % Daily Value (DV) tells you how much a nutrient in a serving of food contributes to a daily diet 2,000 calories a day is used for general nutrition advice.</small>	



# COMPLAINT MANAGEMENT

Regardless of whether the complaint has originated from a customer, a vendor or even internally, CompuTec ProcessForce's complaint management functions provide a framework to ensure each and every issue is handled correctly and the appropriate remedial action is taken in every case.

- Track the progress of returns and samples from customers and suppliers
- Manage the entire lifecycle of complaints
- Trace batches and serial numbers associated with complaints
- Record complaint type, code and action taken
- Trigger quality control tests and product recalls
- Customizable system alerts to ensure swift response times

Designed to give complete transparency over your complaint procedures, CompuTec ProcessForce allows you to manage your complaints using complaint codes, status, date, batch or serial numbers. You can attach notes and images to each complaint or link them to quality control tests. You'll receive alerts, be able to create reports and if necessary instigate hassle-free product recall procedures.

Because all CompuTec ProcessForce users in your enterprise will have access to up-to-date, detailed information about complaints and their current status, all your employees will have the tools to be more responsive. This is particularly advantageous for maintaining excellence in your warehousing practices.





# DYNAMIC PRODUCT COSTING

CompuTec ProcessForce features a dynamic costing enhancement to SAP Business One which means complex calculations such as enterprise-wide cost-roll ups can be carried out in a fraction of the time it would otherwise take.

- Measure financial performance
- Customizable in-depth multi-level product costing
- Dynamic in-memory cost calculations for unprecedented speed
- Multi-structure fixed and variable overhead costs management
- Automatic currency conversion to your working currency

## Resource costing

- Machinery – allocate costs to each phase in the machine's operational cycle
- Labor
- Subcontracting

## Item costing

- Wide range of cost presentation methods
- Record and calculate coproducts and scrap
- Define costs on a warehouse-by-warehouse basis
- Divide overheads either by value or percentage

## Cost Rollups

- Even extremely large and complex roll-ups can be completed in a matter of minutes
- Material costs and processing costs
- Customizable calculation methods

## Manage multiple cost categories for "what-if" simulations and analysis

- Compare current and future costs
- See how improvement projects and price changes will impact production and analyze the potential for savings
- Implement your preferred cost category at the click of a button
- Automatic inventory reevaluation when you select your preferred cost category

## Wide range of cost allocation and cost calculation methods based on SAP Business One Item Master Data

- Standard Costing – for items with static costs
- Moving average – for items with volatile costs
- FIFO – for perishable goods
- Batch / Serial Number – when costs for each batch or item purchased tends to vary

## Costed Bill of Materials

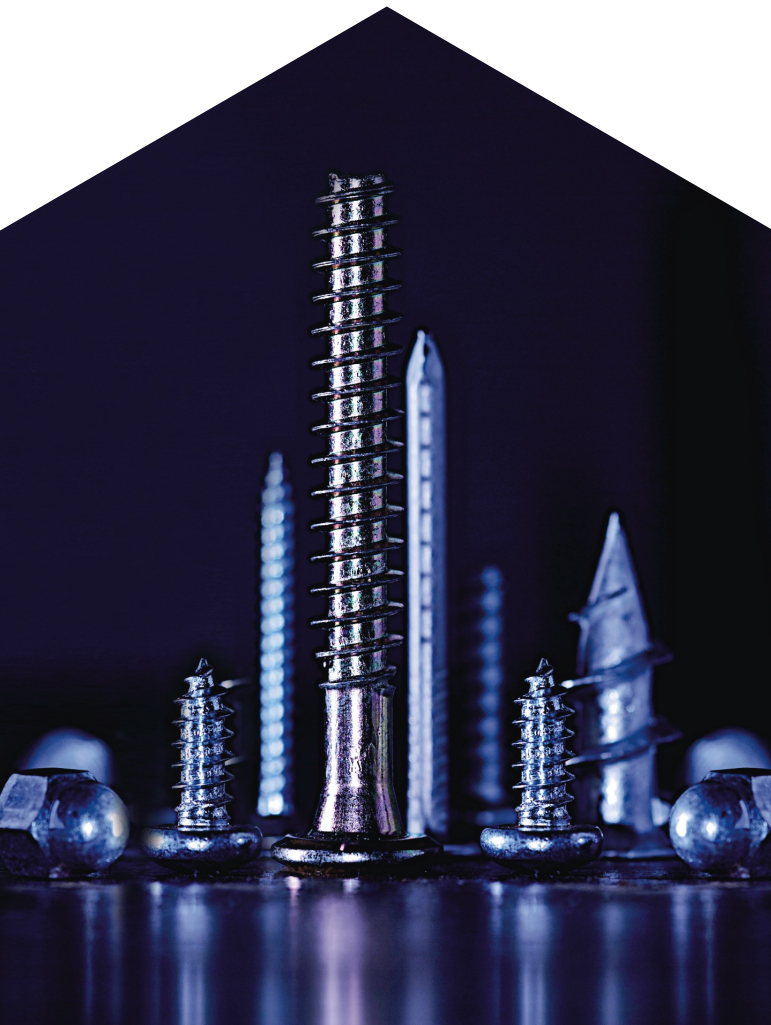
- Check how different suppliers, components or ingredients, machinery, labor and subcontractors will affect the cost of your final product
- Unlimited simultaneous product revisions to help you evaluate the best production materials and methods
- An invaluable tool in negotiating terms and pricing with potential customers and evaluating risk

## Production costing analysis – planned vs. actual

- Compare forecasted and real financial performance for each Manufacturing Order
- Analyze production costs and take corrective actions where applicable

## Costing reports

- Costing Variance Report
- Production Efficiency Report



Resource Costing

Resource Code100

Resource Namecutting

Cost Category Cor001

#	Cost Type	Hourly Rate	Fixed O/H	Fixed O/H %	Value	Other	Sub-Total	Variable O/H	Variable O/H %	Value	Other	Sub-Total	Total	Remarks
1	Queue Time	2.000	3.000	0.000	0.000	1.000	4.000	2.000	0.000	0.000	0.000	2.000	8.000	
2	Setup Time	1.000	2.000	0.000	0.000	2.000	4.000	3.000	0.000	0.000	0.000	3.000	8.000	
3	Run Time	2.000	5.000	0.000	0.000	3.000	8.000	1.000	0.000	0.000	0.000	1.000	11.000	
4	Stock Time	1.000	5.000	0.000	0.000	0.000	5.000	0.000	0.000	0.000	0.000	0.000	6.000	

Update

Cancel

Item Costing

Item Codestrawberry jam 200ml

Item Namestrawberry jam 200ml

Revision Codecode00

Cost Category Cor001

MRP TypeMake

Valuation Method

UoM

Batch Size1.000

Serial/Batch

Costing Details		Coproducts	Scrap	Rolled Cost												
#	Warehouse	Type	Price List	Item Cost	Fixed O/H	O/H %	Value	Other	Sub-Total	Variable O/H	O/H %	Value	Other	Sub-Total	Total	Remarks
1	01	Automat		7.408	3.000	10.000	0.741	0.000	3.741	2.000	10.000	0.741	0.000	2.741	13.889	
2	02	Automat		7.408	3.000	10.000	0.741	0.000	3.741	2.000	10.000	0.741	0.000	2.741	13.889	
3	03	Automat		7.408	3.000	10.000	0.741	0.000	3.741	2.000	10.000	0.741	0.000	2.741	13.889	
4	04	Automat		7.408	3.000	10.000	0.741	0.000	3.741	2.000	10.000	0.741	0.000	2.741	13.889	
5	FR01	Automat		7.408	3.000	10.000	0.741	0.000	3.741	2.000	10.000	0.741	0.000	2.741	13.889	
6	Prod	Automat		7.408	3.000	10.000	0.741	0.000	3.741	2.000	10.000	0.741	0.000	2.741	13.889	
7	Sub Con	Automat		7.408	3.000	10.000	0.741	0.000	3.741	2.000	10.000	0.741	0.000	2.741	13.889	

OK

Cancel

Update Costing

Costed Bill of Materials

Item CodeProduct03-Std

Item NameProduct03-Std

Revisiondefault

WarehouseGeneral Warehouse

Batch Size100.000

RoutingRouting01

Cost CategoryStandard cost

Dynamic calculations

Static calculations

Use real raw materials costs

Use the Final-Good batch size for

Use own coproducts costs for c

Use own scrap costs for calculat

TC Material66.540100.00 %

TC Resources0.0000.00 %

TC Fixed O/H0.0000.00 %

TC Variable O/H0.0000.00 %

TC Total66.540

CC Batch Size1.000

#	Type	Item ...	Item ...	Revisor	Ware...	Quan...	ATL Ma	ATL Res	ATL ...	ATL ...	LL Mat	LL Res	LL Flc...	LL Va...	LL T...	CA Mat	CA Res	CA Fl...	CA V...	CA T...	TC Mat	TC Res	TC Fl...	TC V...	TC T...
1	Final Good - Produc																								
2	Semi Good - Produc																								
3	Semi Good - Produc																								
4	Raw Mat																								
5	Raw Mat																								
6	Raw Mat																								
7	Raw Mat																								
8	Coproduct																								
9	Scrap																								
10	Routing																								
11	Operator																								
12	Resource																								
13	Details																								
14	Details																								
15	Details																								
16	Details																								
17	Raw Mat																								
18	Routing																								
19	Operator																								
20	Resource																								
21	Details																								
22	Details																								
23	Details																								
24	Details																								
25	Routing																								
26	Operator																								

OK

Cancel

Refresh

Expand All

Collapse All

# MATERIAL RESOURCE PLANNING

## Finding the balance between supply and demand

CompuTec ProcessForce's Material Resource Planning (MRP) functionality orchestrates the flow of components, ingredients and parts throughout your organization.

- Optimize MRP by means of true data integrity  
Up-to-date, error-free data will allow you to plan manufacturing activities, delivery schedules and purchasing activities, offer recommendations and generate real-time reports
- Run MRP for default product revisions
- Forecast the flow of inventory
- Receive system recommendations about material reserves
- Ensure availability of materials for production and of final goods for shipping
- Maintain minimal stock levels to free up capital and reduce warehousing costs while still preventing shortages
- Shorten lead times and enhance productivity
- Promise accurate lead times to your customers and increase customer satisfaction

## REPORTING AND ANALYTICS

CompuTec ProcessForce draws on your data and calculations to generate a wide range of cost and production efficiency reports. With this information at your fingertips you can ensure your production processes are optimized from start to finish and your machine park is operating at maximum efficiency.

- Real-time analytics for fast, data-driven decision making
- Compare and analyze current and historical performance to determine areas for improvement and take action
- Drill down key data to get the level of detail you need
- Choice of Reporting Tools: User Queries, SAP Crystal Reports, Semantic Layer, KPI and Dashboards widgets, Excel Reports and Interactive Analysis, SAP Analytics Cloud
- Set up automated triggers for report creation and email reports to the appropriate recipients
- Identify the causes of downtime and other areas for improvement and decide on the best investment strategies to improve efficiency in your production process.

### Manufacturing Order Reports

- Compare the planned and actual costs of the entire production process for each order
- Break down costs into material and resource costs and compare planned vs. actual values
- Review current resource status along with its planned and current workflow

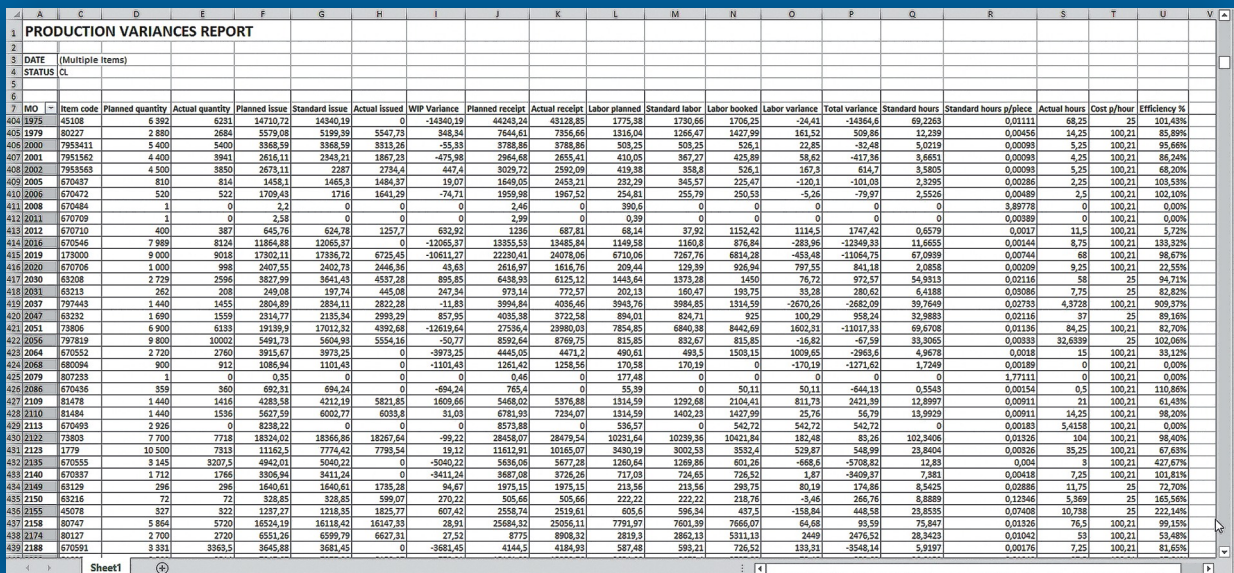
**Supplier Scorecard** – evaluate suppliers' performance based on information about quality, quantity accuracy and punctuality of deliveries.

**Non-Conforming Materials Report** – report non-conforming material identified during Quality Control procedures or inventory movements.

**Certificate of Analysis (CoA)** – confirm the compliance of regulated products.

CompuTec ProcessForce data can be used with all SAP HANA reporting and analytics capabilities to create a wide variety of other reports depending on your needs.





Manufacturing Order Resource - Overview

CompuTec  
Innovation Matters

MOR

Operation

Resource

RUN TIME

DocNum	Status	Seq	Name	Finished	Advance	LineNo	Ty	Name	Status	actual										reasons		
										start	end	time [hh]	time [ss]	qty	temp	start	end	time [hh]	time [ss]	qty	temp	rework
1600070001	Closed	50	Operation 1	Finished	100%	1	M	resource 1	Finished	10-13-2018	10-15-2018	27:43:00	99780	500 000,00		10-30-2018	11-14-2018	77:10:41	277841	488 216,00		
1600070101	Closed	50	Operation 2	Finished	100%	10	T	resource 2	Finished	10-14-2018	10-15-2018	27:43:00	99780	500 000,00								
1600070111	Closed	50	Operation 3	Finished	100%	11	T	resource 3	Finished	10-14-2018	10-15-2018	27:43:00	99780	500 000,00								
1600070101	Closed	70	Operation 4	Finished	100%	5	M	resource 4	Finished	10-11-2018	10-11-2018	1:21:00	4860	35 000,00		11-25-2018	11-25-2018	2:08:59	7739	35 000,00		
1600070101	Closed	70	Operation 5	Finished	80%	14	T	resource 5	Finished	10-11-2018	10-11-2018	1:21:00	4860	35 000,00								
160007005	Closed	50	Operation 6	Finished	100%	10	T	resource 6	Finished	10-20-2018	10-21-2018	9:49:00	35340	100 000,00								
160007005	Closed	50	Operation 7	Finished	100%	3	M	resource 7	Finished	10-20-2018	10-21-2018	9:49:00	35340	100 000,00		11-17-2018	11-25-2018	41:49:23	150563	143 301,00		
1600070105	Closed	60	Operation 8	Finished	100%	13	T	resource 8	Finished	10-04-2018	10-05-2018	1:11:00	4260	11 500,00								
1600070105	Closed	60	Operation 9	Finished	80%	4	M	resource 9	Finished	10-04-2018	10-05-2018	1:11:00	4260	11 500,00								
160007009	Closed	60	Operation 10	Finished	80%	12	T	resource 10	Finished	10-04-2018	10-04-2018	11:17:00	40620	111 000,00								
160007009	Closed	60	Operation 11	Finished	80%	3	M	resource 11	Finished	10-04-2018	10-04-2018	11:17:00	40620	111 000,00								
1600070107	Closed	50	Operation 12	Finished	80%	19	T	resource 12	Finished	10-05-2018	10-05-2018	0:23:00	1380	2 020,00								
1600070107	Closed	50	Operation 13	Finished	100%	7	M	resource 13	Finished	10-05-2018	10-05-2018	0:23:00	1380	2 020,00		10-13-2018	10-13-2018	0:32:00	1920	2 090,00		
1600070107	Closed	50	Operation 14	Finished	100%	1	M	resource 14	Finished	10-03-2018	10-03-2018	0:20:00	1200	4 740,00								
160007008	Closed	50	Operation 15	Finished	100%	1	M	resource 15	Finished	10-02-2018	10-02-2018	0:32:00	1920	7 616,00								
1600070101	Closed	50	Operation 16	Finished	100%	5	M	resource 16	Finished	10-17-2018	10-17-2018	3:40:54	50764	126 889,00		10-18-2018	10-18-2018	26:30:43	95443	181 300,00		
160007005	Closed	20	Operation 17	Finished	100%	5	M	resource 17	Finished	10-21-2018	10-21-2018	5:43:00	20580	50 862,00		11-16-2018	11-16-2018	7:15:42	26142	51 062,00		
1600070107	Closed	20	Operation 18	Finished	100%	4	M	resource 18	Finished	10-06-2018	10-06-2018	0:15:00	900	2 060,00		10-06-2018	10-06-2018	0:15:09	909	2 060,00		
1600070101	Closed	10	Operation 19	Finished	100%	5	M	resource 19	Finished	10-03-2018	10-03-2018	0:07:00	420	2 000,00								
1600070106	Closed	10	Operation 20	Finished	75%	4	M	resource 20	Finished	10-03-2018	10-03-2018	0:07:00	420	2 000,00								
160007007	Closed	10	Operation 21	Finished	100%	4	M	resource 21	Finished	10-03-2018	10-03-2018	0:07:00	420	2 000,00		10-10-2018	10-10-2018	0:12:37	747	4 000,00		
1600070103	Closed	10	Operation 22	Finished	100%	4	M	resource 22	Finished	10-03-2018	10-03-2018	0:07:00	420	2 000,00		10-07-2018	10-07-2018	0:00:11	11	2 000,00		
1600070103	Closed	10	Operation 23	Finished	100%	4	M	resource 23	Finished	10-03-2018	10-03-2018	0:07:00	420	2 000,00		10-14-2018	10-14-2018	0:05:06	306	2 000,00		
160007009	Closed	30	Operation 24	Finished	75%	5	M	resource 24	Finished	10-04-2018	10-04-2018	2:58:00	7680	18 819,00								
1600070101	Closed	40	Operation 25	Finished	75%	3	M	resource 25	Finished	10-18-2018	10-18-2018	0:13:00	780	1 771,00		11-17-2018	11-17-2018	0:33:45	2025	1 850,00		
160007003	Closed	30	Operation 26	Finished	75%	4	M	resource 26	Finished	10-18-2018	10-18-2018	0:09:00	540	1 142,00		11-17-2018	11-17-2018	0:38:48	2328	1 250,00		
1600070101	Closed	30	Operation 27	Finished	100%	2	M	resource 27	Finished	10-18-2018	10-18-2018	0:14:00	840	1 895,00								
1600070104	Closed	30	Operation 28	Finished	100%	6	M	resource 28	Finished	10-01-2018	10-01-2018	0:07:30	450	4 918,00								
160007008	Closed	20	Operation 29	Finished	100%	6	M	resource 29	Finished	10-01-2018	10-01-2018	0:12:00	720	7 272,00								
160007002	Closed	20	Operation 30	Finished	100%	7	M	resource 30	Finished	10-03-2018	10-03-2018	0:03:00	180	1 273,00		10-03-2018	10-06-2018	0:11:17	677	1 273,00		
1600070101	Closed	40	Operation 31	Finished	100%	3	M	resource 31	Finished	10-01-2018	10-02-2018	0:02:00	120	895,00								
1600070106	Closed	40	Operation 32	Finished	100%	2	M	Linia Polar	Finished	10-04-2018	10-04-2018	0:04:00	240	1 781,00								

Sheet

Sheet1 (2)

## BESPOKE EXTENSIONS

All CompuTec ProcessForce customers have access to CompuTec AppEngine, an OData v4 application programming interface. This opens up infinite possibilities.

- Aids integrations with machinery and other IT solutions based on HTTP protocols
- Develop or commission your own custom CompuTec ProcessForce extensions and plugins with HTML based user interfaces
- Ideal for very niche businesses with extremely specialized requirements

## OTHER COMPUTEC SOLUTIONS

#CompuTec  
**PDC**

An extension for CompuTec ProcessForce to record real manufacturing operations timings and communicate easily and effectively with the staff on the shop floor.

#CompuTec  
**WMS**

A logistics solution to manage your warehousing processes from handheld devices and optimize how they support your production processes.

#CompuTec  
**Labels**

A label printing management solution which ensures your inventory is labelled accurately and exactly according to your particular business needs.



An official **CompuTec** partner

**Logres Business Solutions B.V.**

Koolhovenstraat 2

3772 MT Barneveld

Tel: 0342-421500

[www.logres.nl](http://www.logres.nl)

[www.logres.nl/branche/procesindustrie/](http://www.logres.nl/branche/procesindustrie/)

Email: [info@logres.nl](mailto:info@logres.nl)

Logres Business Solutions is a Gold partner of SAP Business One and ProcessForce in the Netherlands. Your partner for the ERP solution in the Process Industry.