

**LOGRES**

BUSINESS SOLUTIONS

**#CompuTec**  
**WMS**

Warehouse  
Management Solution

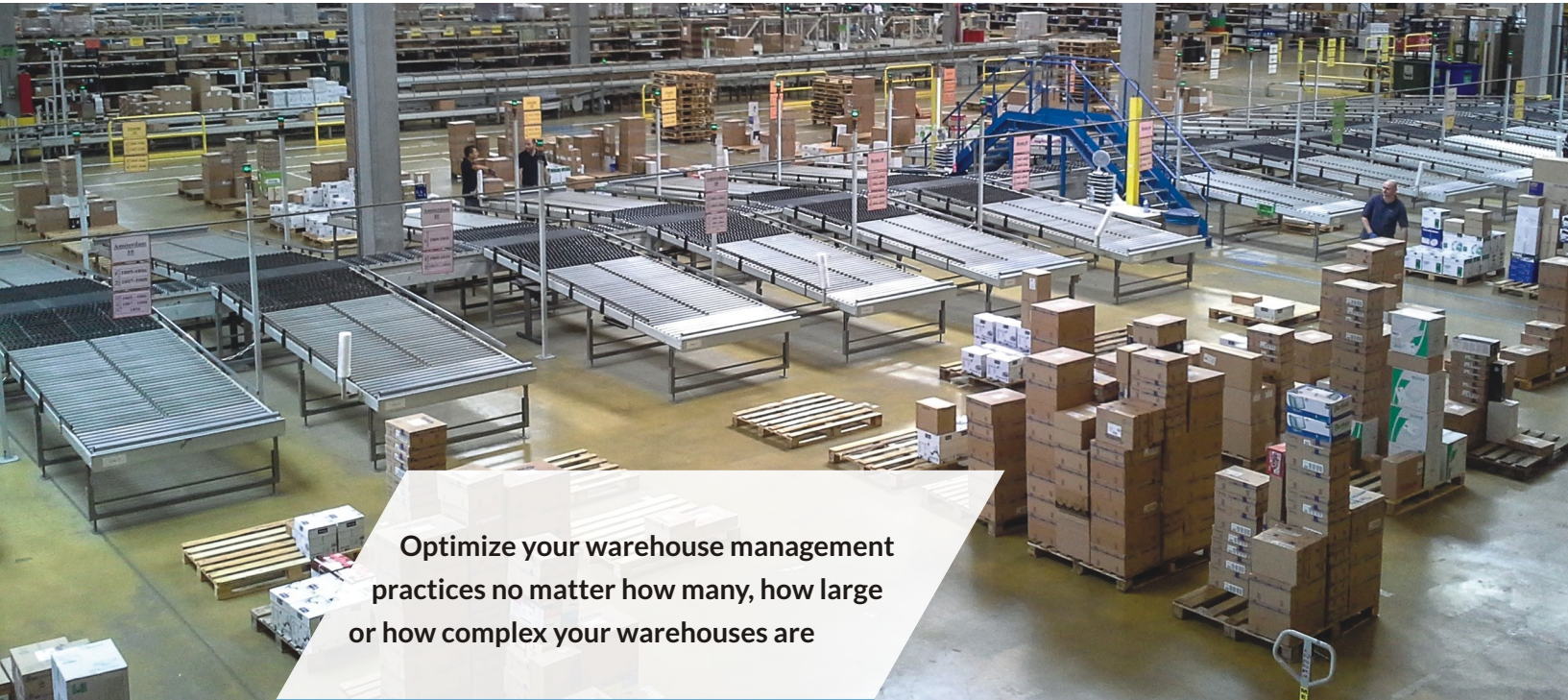
Excellence in warehouse management





# Warehouse Management Solution

A logistics solution to manage your warehousing processes from handheld devices and optimize how they support your production processes.



**Optimize your warehouse management practices no matter how many, how large or how complex your warehouses are**

- Organize and control logistics processes
- Track availability and flow of inventory
- Maintain discrepancy free warehouse data
- Reduce stocktaking costs and time
- Faster order completion

## WHY USE WAREHOUSING SOFTWARE TOGETHER WITH YOUR SAP BUSINESS ONE SOLUTION?



Real-time data entry from handheld devices will allow you to manage inventory allocations, deliveries and orders on the spur of the moment



Tighter inventory control will help you balance supply and demand throughout your facility, avoid mistakes and prevent inventory shortages even when working with a reduced inventory



Centrally manage multiple warehouses and bin locations



Incremental implementation possible to suit your business needs



Optimize replenishment strategies



Manage, prioritize and dispatch orders from within a single user interface



## MANAGE LOGISTICS PROCESSES

With full support for all logistics documents CompuTec WMS helps you organize and monitor inventory movements from the moment an item arrives in your warehouse to the moment it leaves either intact or as part of a final product.

- Make better business decisions based on accurate real-time inventory data with enterprise-wide consistency at warehouse, zone and bin level
- Develop customer-centric warehouse management practices to guarantee on-time, correct deliveries and enhance customer satisfaction levels
- Gain agility and responsiveness through your warehouses even in highly dynamic industries
- Trim down surplus inventory, minimize inventory obsolescence and free-up capital
- Reduce paperwork and data-entry errors

**CompuTec WMS provides users with an extensive range of functionalities.**

- User-friendly, intuitive and fully customizable interface ensures smooth workflow for your warehouse operatives
- System recommendations to help you control the flow of inventory
- Real-time, customizable semaphore protocols – incomplete tasks re-render the open tasks pool automatically ensuring all work is completed on time
- Manage multiple companies
- Extensive integration capabilities

### Items to pick receipt

Product-B 01	EA
Product-B Product-B 01	44/0 EA
Recipe-02 Recipe-02 01	12/27,778 KG
Recipe-02 Recipe-02 01	55/27,778 KG

### Batch (2/3)

strawberry jam 200ml strawberry jam 200ml 01: 01-01	0/70
To receipt Received	70 0
Classification	21441
Enter Batch	165222
Quantity	2,435

### SU Operations

SU Disassembly

SU Wizard

SU Creator

New SU

Close SU

SU Pick And Pack

Go Back

## SUPPORT THE PRODUCTION PROCESS

CompuTec WMS can be used in conjunction with SAP Business One's production module or, for those with more sophisticated production needs, with our own advanced manufacturing solution, CompuTec ProcessForce, to fully integrate your warehouses with your shop floor.

- Support optimized production scheduling by ensuring raw materials and components are correctly replenished and end up in the right place at the right time for varied, but continuous, production flow
- Develop inventory management strategies based on Bills of Materials (BoMs)
- Minimize and achieve visibility over the materials currently on the shop floor at any given moment
- Configure your warehousing system to respond to changes in production e.g. from batch processing to sequential assembly
- Reduce waste and delays by automating inventory flow

## BATCH AND SERIAL NUMBERS SUPPORT

- Design your own batch and serial number templates
- Define batch and item properties and classifications e.g. vegan, gluten free, toxicity levels, potency etc.
- Access batch status, batch location data and more in an instant
- Trace the lifecycle of batches and inventory and create an instantly accessible audit trail

## HANDLING AND STORAGE UNIT MANAGEMENT

- User-friendly Storage Unit creation wizard
- Manage multi-level storage units
- Set-up what data is stored about each unit e.g. weight, dimensions, manufacture date, batch number, storage restrictions and properties of the contents (flammable, hazardous etc.)
- Attach step-by-step procedures for physical interaction, handling instructions, safety guidelines and photographic evidence to inventory
- Provide staff with clear protocols for dealing with damaged and non-compliant inventory
- Create homogeneous and mixed storage units and add stock to existing storage units
- Create transfer orders and confirm stock movements for storage units
- Optimize your available storage space
- Recognize shrinkage



## STOCK COUNTING

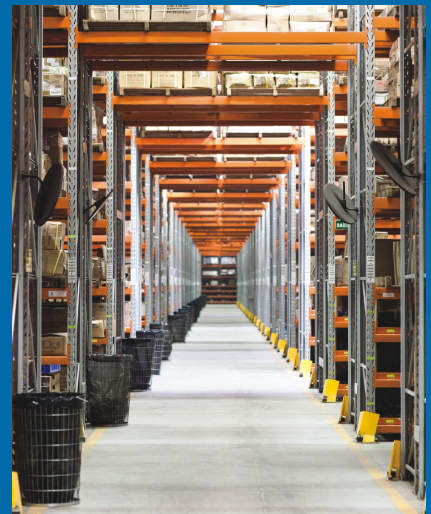
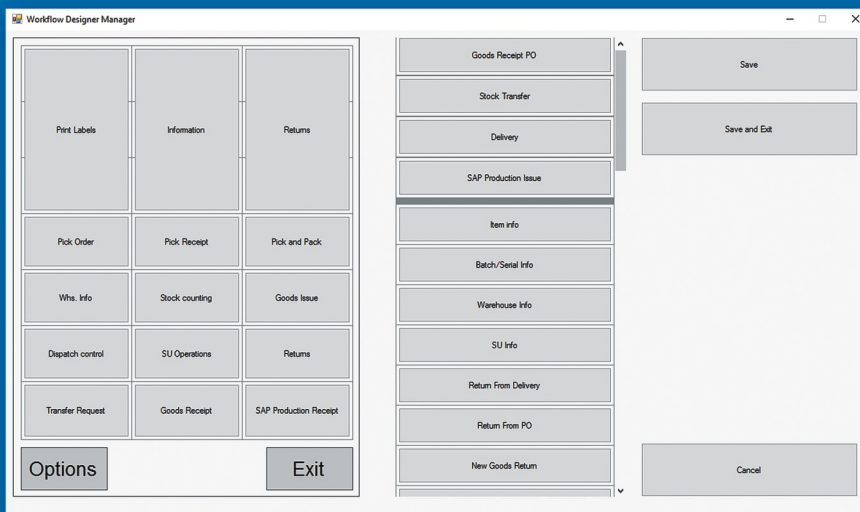
- Double Stock Counting to ensure absolute precision – SAP Business One Stock Count supported by physical stock counting, either manually or using barcode scanners
- Fast, automated stock counting means minimal disruption to the working day
- Search your warehouses for particular items





## DESIGN AND MANAGE TASK QUEUES AND WORKFLOWS

- Keep warehousing operatives focused, on-task and motivated with a clear, easy to follow system communicated to them via handheld devices
- System managed goods receipt, put away, picking, returns, dispatch and stock counting processes
- Shelf-life picking based on customer agreements
- Users and managers can allocate unassigned tasks to themselves or particular employees
- Assigned tasks which have remained inactive for designated time periods are automatically re-entered into the pool of unassigned tasks
- Integrate even complex receiving, put-away and picking procedures into your system

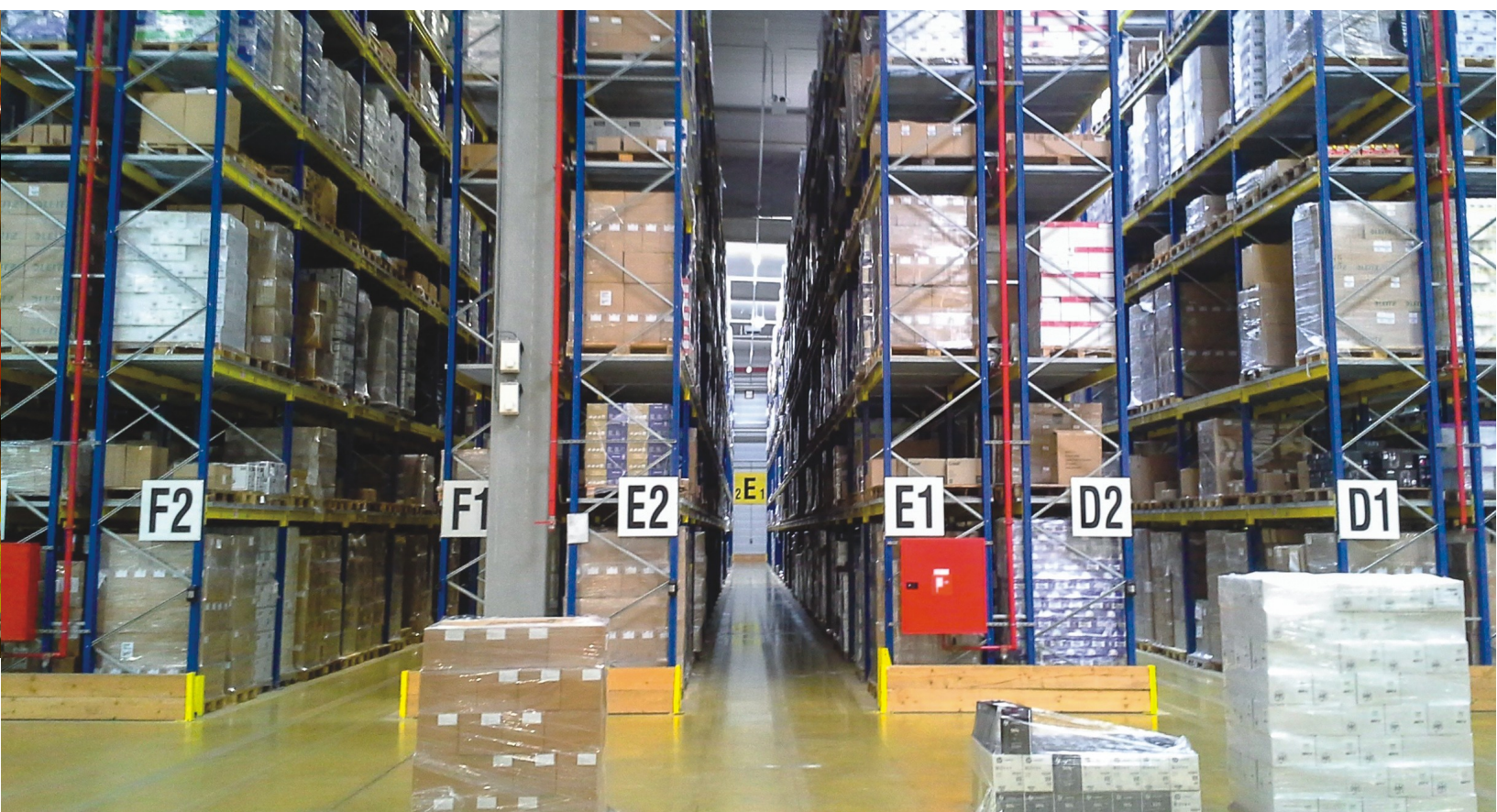


## PACKING PROCESS MANAGEMENT

- Issue dispatch operatives with precise instructions and protocols
- Implement and enforce standardization in your packages for delivery
- Define packing standards by warehouse, customer, item etc.

## BATCH MANAGEMENT

- Batch queue manager
- Variety of batch item selection workflows
- Batch serialization to support traceability needs





## CUSTOMIZATION

A supremely flexible solution, CompuTec WMS can be customized to suit your way of doing business.

### Customize the interface for each user or warehouse

- Ensure that only well-trained and experienced employees are allocated tasks involving specialized procedures and equipment
- Customize workflow
- Decide which data and documents are available to each warehouse
- Give managers and foremen access to data needed to create KPIs and reports using standard SAP Business One reporting tools for data-driven decision making

### User Defined Fields

- Easy and quick to set up
- Integrate quality control procedures and checklists into your warehouse processes
- Monitor complex and highly specialized inventory and storage condition data

### Full data validation

As well as SAP Business One validation, you can add CompuTec WMS's own quick, responsive and easy to use validation to all CompuTec WMS, ProcessForce and User-Defined Fields.

### SQL query fields

- Pull any data from anywhere in your database and display it for your employees' reference
- Draw on multiple database entries to display the results of any calculations you need



"We were really impressed with the CompuTec Team's ability to customize their WMS product in our Canadian subsidiary to fit in with our specific business procedures."

*Laurent Courtet  
Euralis, France and Canada*

## FULL WEIGHT SCALES INTEGRATION

- Support goods receipt, picking from the warehouse and preparing ingredients for production
- Fast, automated, high-precision weight measurement in a fraction of the time of manual weighing
- Reduce waste and improve control over the supply chain
- Record accurate weights for quality control and audit purposes







## DATA INPUT VIA GS1 BARCODES AND TOUCHSCREEN HANDHELD DEVICES

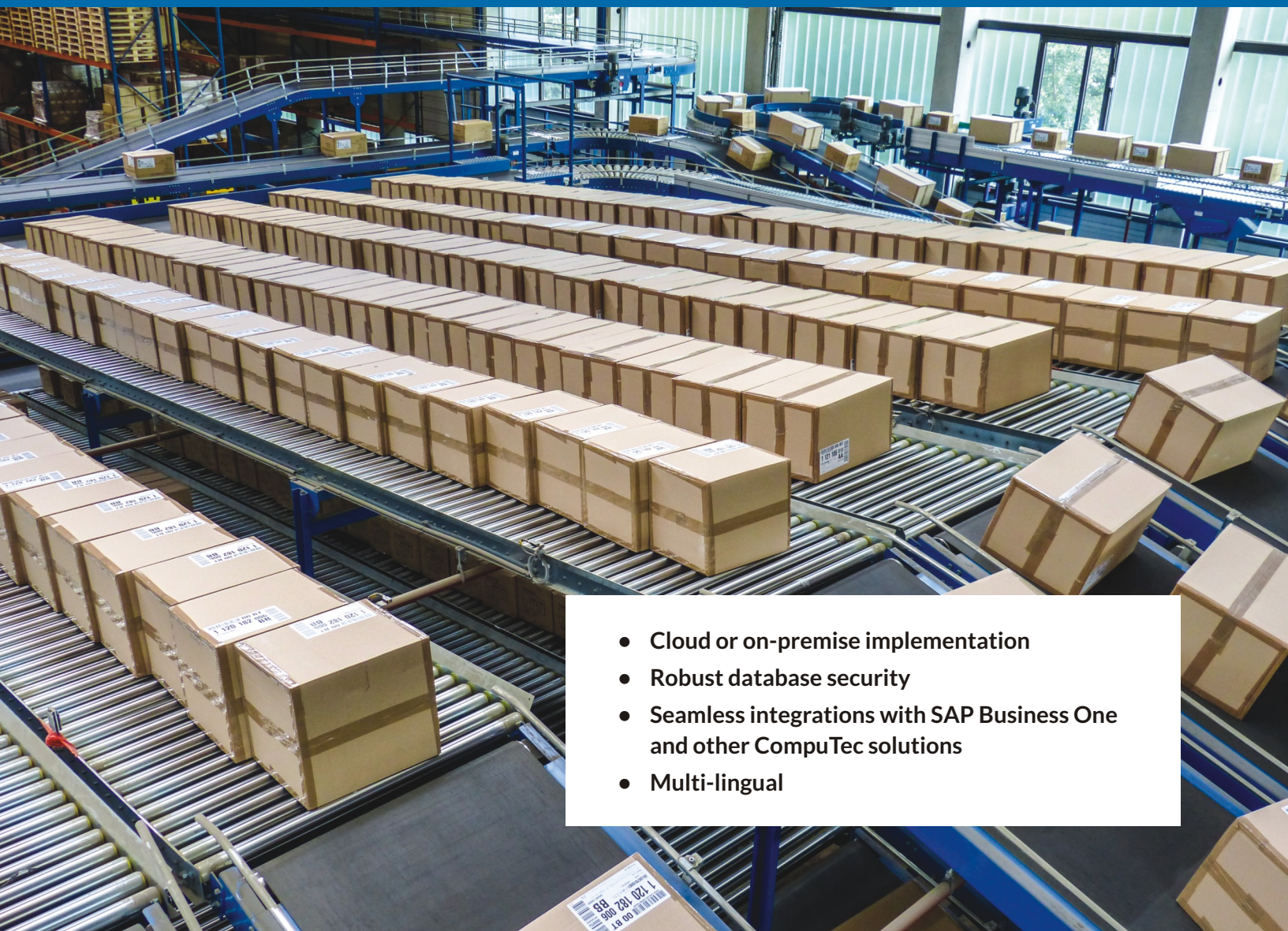
### TOUCHSCREEN DEVICES

- Allow users to view and manage assigned and unassigned tasks, instructions and more
- Data entry from anywhere in your warehouse, even your forklift truck
- Manage the user interface so that each operative only sees and has clearance to change the data relevant to them

### GS1 BARCODE SCANNERS

Oddete, Code 128, GTIN, SSCC & GS1-128 Barcode scanners and GS1 DataMatrix 2D barcodes

- Automate goods intake, inventory movement and shipment procedures
- Extremely fast, reliable data entry
- Get goods off the loading dock quickly
- On-the-fly inventory movements
- Track used and unused space throughout your warehouse



- Cloud or on-premise implementation
- Robust database security
- Seamless integrations with SAP Business One and other CompuTec solutions
- Multi-lingual



## #CompuTec **Labels**

CompuTec Labels is a solution which manages all your label printing requirements and can extend the possibilities of CompuTec WMS to include label printing directly from your warehouse as needed. Industry standard compliant labels will save you time and money, speed up order fulfillment and make life immeasurably easier for your warehouse operatives.

- Accurate, comprehensive labelling designed according to your business requirements
- Set up automatic label printing after any transaction and use that same label on subsequent transactions in the supply chain
- Relabeling of containers after stock transfer
- Spare your employees the frustration of lost products and "mystery containers"



## #CompuTec **ProcessForce**

CompuTec ProcessForce is an intelligent solution which extends SAP Business One to meet the needs of advanced manufacturers.

Using WMS in conjunction with CompuTec ProcessForce gives you access to several additional CompuTec WMS functionalities which will synchronize your warehouse with your production line even further.

- Pick Order and Pick Receipt documents trigger real-time, enterprise-wide data updates
- Faster, streamlined data input during goods receipt
- Customizable picking procedures – choose where to streamline processes and where to break them down into stages for increased transparency and checks
- Input data straight from the production line while maintaining a stream of up-to-date information to your back office
- Create Inventory Transfer documents based on Manufacturing Orders (in the office or from the production line)
- Easier batch management and batch creation processes
- Backwards and forwards traceability
- Manage shelf-life and expiry dates (on a FIFO/FEFO/FIFE basis), product differentiation and product recalls effectively



# TESTIMONIALS

In order to ensure compliance with industry regulations and standards, our inventory needs to be fully traceable at any given moment and the bigger we get, the more complex that becomes. CompuTec ProcessForce and WMS have taken the hassle out of that whole process and eliminated that particular barrier to our company's growth.

---

*Jaymie Crook,  
President, Bosco and Roxy's, Canada*

CompuTec WMS has hugely improved the level of visibility we have over our warehousing processes. We know exactly where everything is and where it has been, precisely what is in each and every storage unit and how our employees should handle and store each piece of inventory which is very important to us as a chemicals manufacturer.

---

*Nicola Lord  
Blackburn Chemicals, UK*

Due to the fact that our warehouse operatives can input data directly into our database from mobile devices in our warehouse, the time spent on administrating our warehouse has been drastically reduced and the system is much easier for our employees to follow. This, along with real-time data updates system-wide, has also meant our operatives and management team can be sure that they have access to reliable and consistent information at all times.

---

*Tomasz Kamiński  
Schnug Logistic Group, Poland*









## OTHER COMPUTEC SOLUTIONS

#CompuTec  
**ProcessForce**

An intelligent solution for advanced manufacturing designed to handle complex production processes in a simple way and accommodate the most precise data management needs.

#CompuTec  
**PDC**

An extension for CompuTec ProcessForce to record real manufacturing operations timings and communicate easily and effectively with the staff on the shop floor.

#CompuTec  
**Labels**

A label printing management solution which ensures your inventory is labelled accurately and exactly according to your particular business needs.

**LOGRES**  
BUSINESS SOLUTIONS

An official **CompuTec** partner

**Logres Business Solutions B.V.**

? cc`cj YbgrfUUh&  
3772 MT Barneveld

Tel: 0342-421500

[www.logres.nl](http://www.logres.nl)

[www.logres.nl/branche/procesindustrie/](http://www.logres.nl/branche/procesindustrie/)

Email: [info@logres.nl](mailto:info@logres.nl)

Logres Business Solutions is a Gold partner of SAP Business One and ProcessForce in the Netherlands. Your partner for the ERP solution in the Process Industry.