

BOYUM CLOUD

# PRODUCE – PRODUCT OVERVIEW



**PRODUCE**

Production order processing

## How can this document help you?

---

1. Understand the value Produce can deliver to your company
2. Who is Produce aimed at and what jobs can it solve
3. Get an overview of the solutions we have for the execution of the jobs

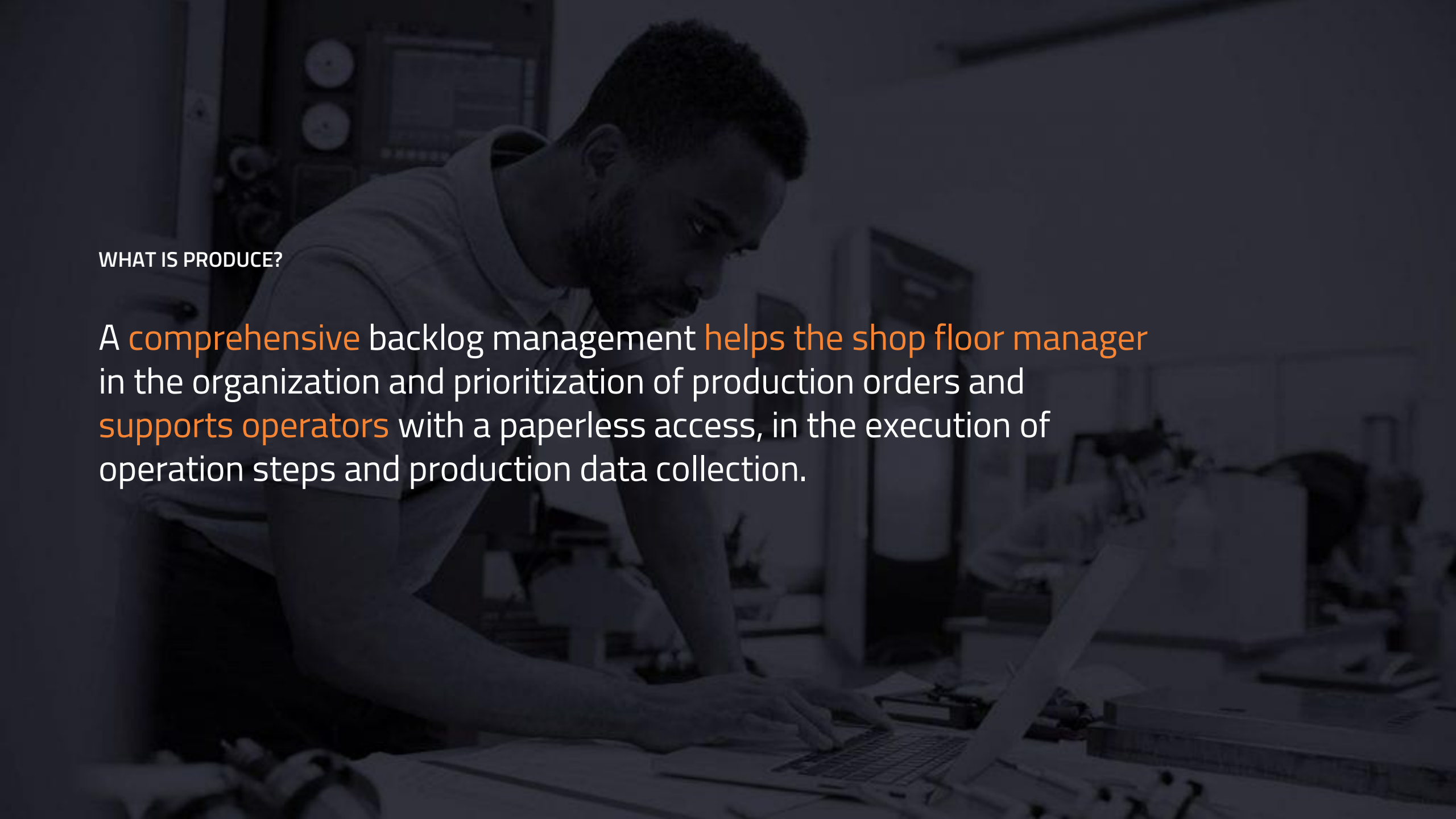


## KEY ISSUE

# Missing support of the shop floor management and employees in there

---

Shop floor management is often not supported by ERP systems. The production backlog is communicated manually from planning to production. The communication between shop floor managers and operators is not supported.

A man with a beard, wearing a light-colored polo shirt, is leaning over a desk in a factory or industrial setting. He is focused on a laptop, with his hands on the keyboard. The background shows industrial equipment, including a control panel with two large circular gauges. The entire image has a dark, blue-tinted overlay.

WHAT IS PRODUCE?

A **comprehensive** backlog management **helps the shop floor manager** in the organization and prioritization of production orders and **supports operators** with a paperless access, in the execution of operation steps and production data collection.



## WHY PRODUCE?

Produce helps to manage and execute production orders by providing **real-time communication** between shop floor manager and operator, increasing **work performance on the shop floor**.

## WHO IS IT DESIGNED FOR?

Produce is aimed at light manufacturing customers from discrete or process manufacturing who want to maximize their shop floor performance through effortless prioritization of production orders and direct communication to operators, without manual paper printouts.

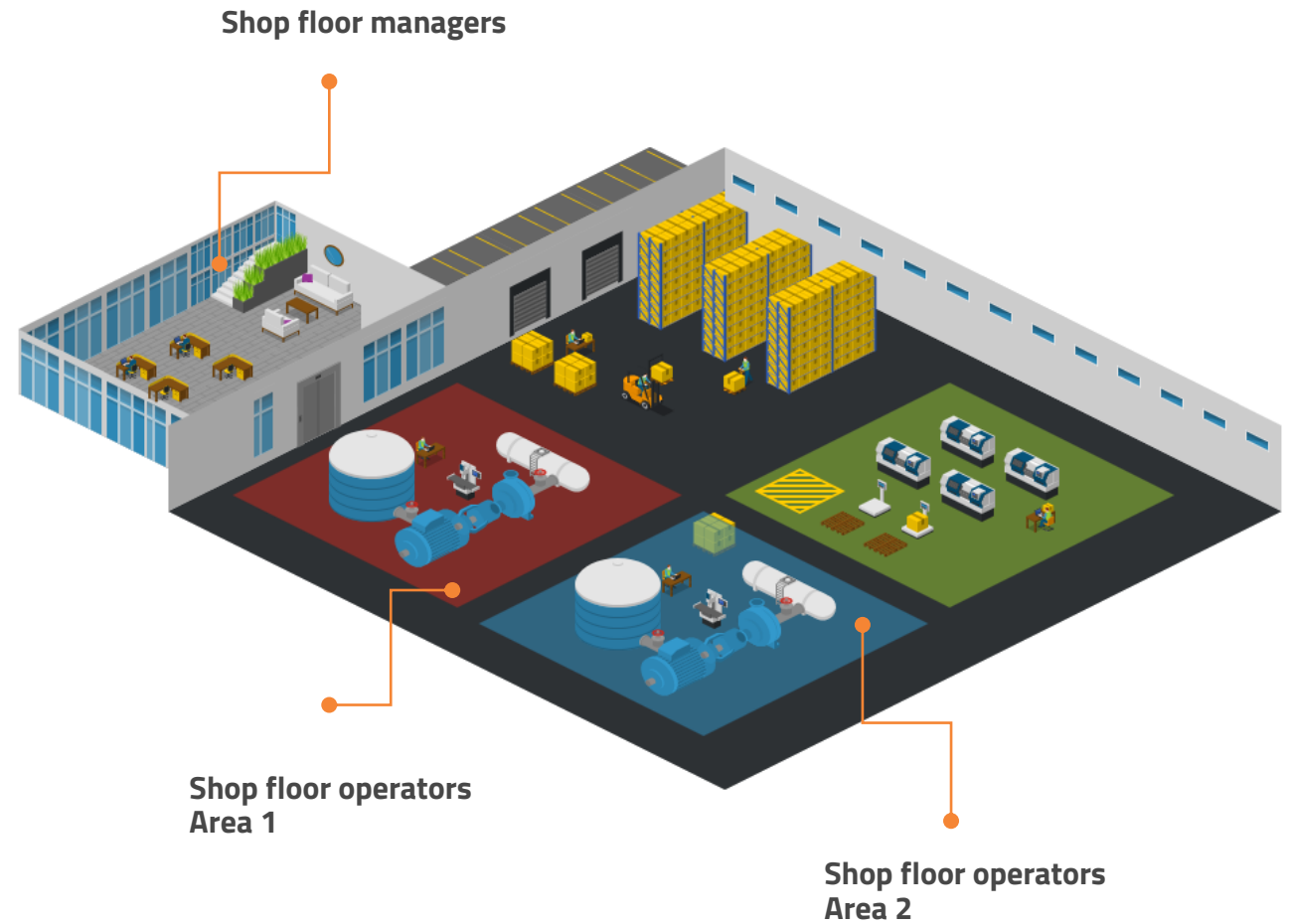
## Get your work done

### *Shop floor manager*

- Organize and prioritize production orders
- Provide production orders for the shop floor
- Monitor production progress in real-time

### *Shop floor operator*

- Select and execute production orders
- Get fast access to production relevant information
- Start and stop operations and collect used time and material





*'I use Produce to organize production orders, and track work in progress in real-time.'*

*John, Shop Floor Manager*

## Shop Floor Manager

### Main jobs

- manage and release production orders
- prioritize production orders as rough planning
- monitor production orders and track progress in real time

### Pains

- no real-time shop floor function available
- not able to keep up with changes, completion, issues... on production orders
- no real-time monitoring of production orders and visualization of the production progress
- overview, prioritization, and release of production orders is too cumbersome

### Gains

- smart production order list
- automatic prioritization of production orders for rough planning
- easy real-time access to the progress of individual operation steps
- production order status overview





*"I use Produce to start and stop operations and collect time and material requirements in an efficient way."*

*Sam, Shop Floor Operator*

## Shop Floor Operator

### Main jobs

- processing of released production orders
- start and stop operations
- register work done and material usage

### Pains

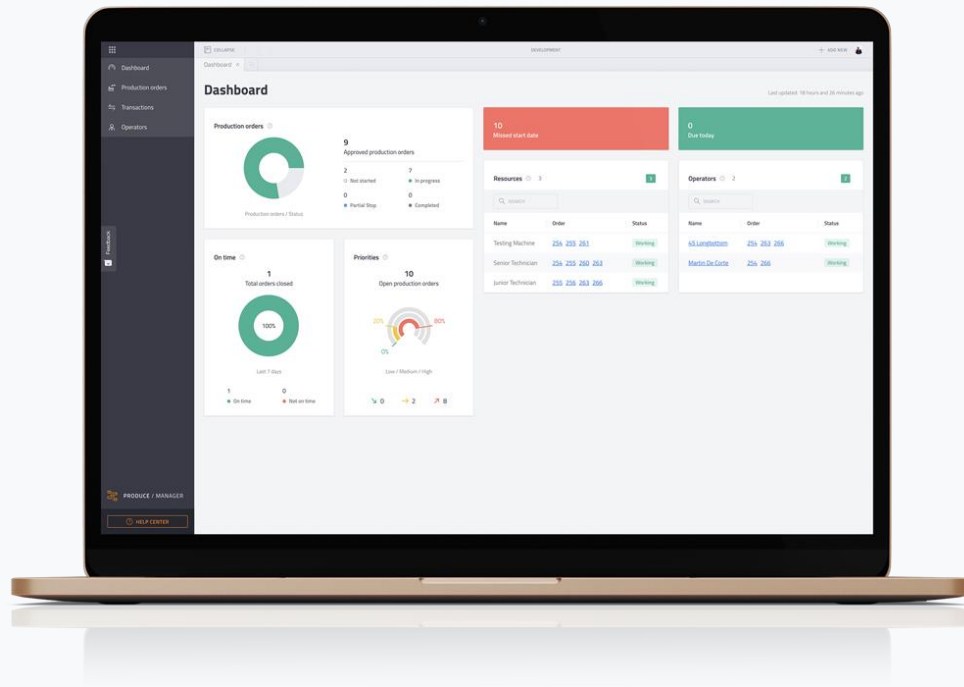
- a lot of paperwork, as time and material is manually recorded on printed production orders
- changes to production orders are not visible as new printouts are required
- missing online access to information that's relevant to production (e.g. material and resource requirements, stock levels, production instructions)

### Gains

- display work list for the next production period
- access to material and resource requirements
- start and stop operations and collect time and material requirements efficiently

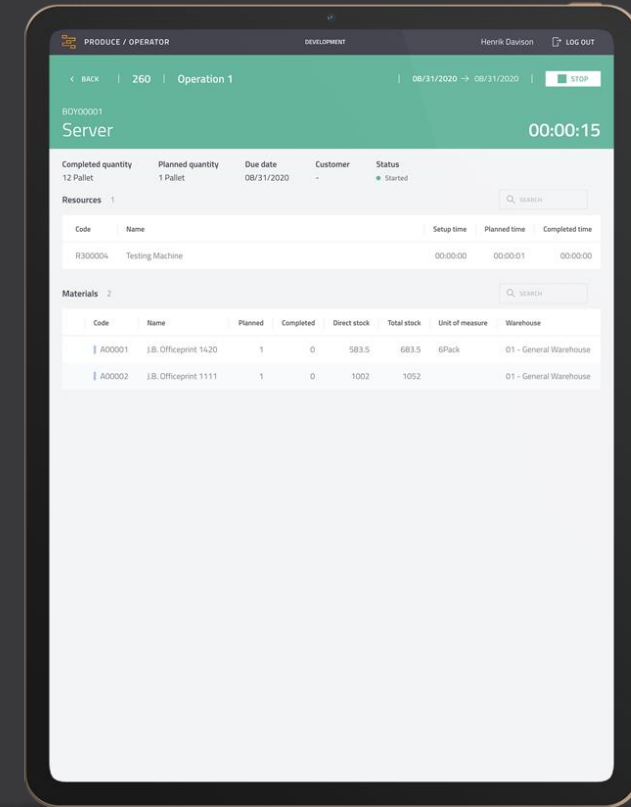


Produce is built up of **2 separate applications** that work seamlessly together.



## MANAGER

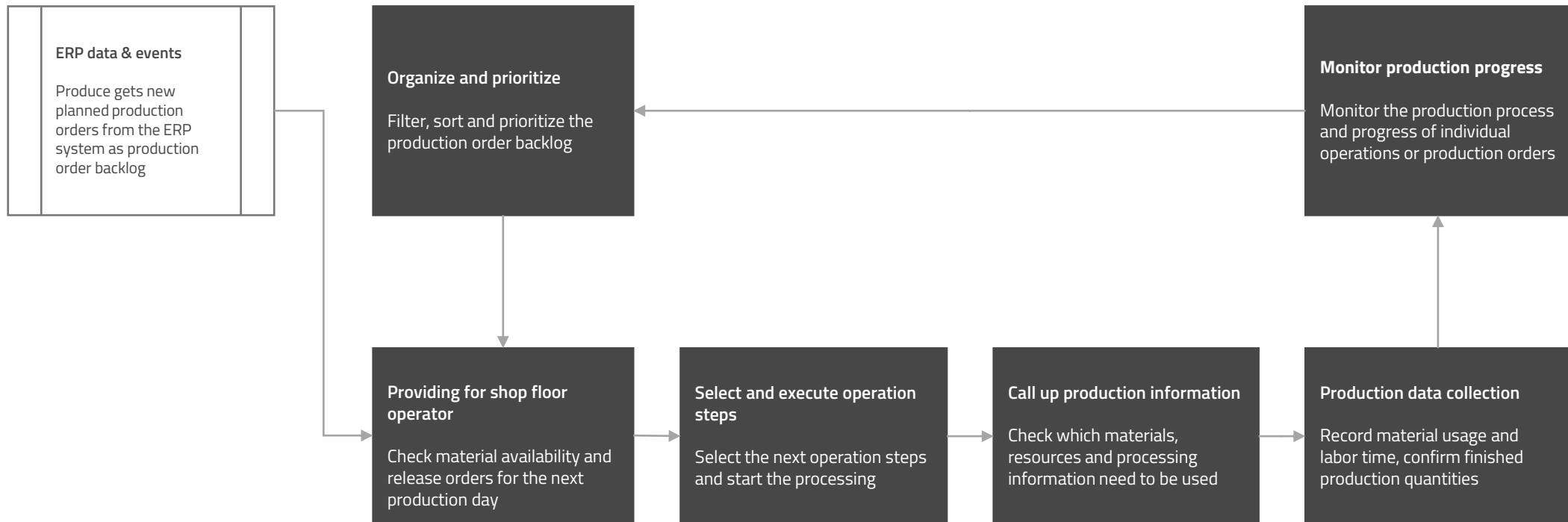
Organize production orders and track progress in real-time



## OPERATOR

View production orders and register work done and material usage

Produce is designed to **work hand in hand** with the ERP system.



1 Organize

2 Execute

3 PDC

4 Monitor

The screenshot displays a web application for managing production orders. On the left is a dark sidebar with navigation options: Master data, Production orders, Transactions, and Operators. The main area shows a table titled 'Production orders' with columns for Production order, Customer name, Item name, Operation status, Priority, Planned quantity, Unit of measure, Start date, Due date, and Status. The table contains 15 rows of data. Two pop-up windows are overlaid on the table. The first pop-up, titled 'Operation status', shows a detailed view of the operation status for a specific order, including a progress bar and a priority indicator. The second pop-up, titled 'In progress', shows a detailed view of the 'In progress' status, including a progress bar and a priority indicator.

Production order	Customer name	Item name	Operation status	Priority	Planned quantity	Unit of measure	Start date	Due date	Status
169	Earthshaker Corporati...	Roadbike Canyon Ultimate A...	0/2	High	1	Pcs	07/10/2020	07/10/2020	In progress
168	B...	Roadbike Wheelset Carbon	0/1	High	10	Pcs	07/13/2020	07/13/2020	In progress
163	ADA Technologies	Roadbike Canyon Aeroad CF ...	2/2	High	1	Pcs	07/14/2020	07/14/2020	Completed
164	Star Company	Roadbike Canyon Aeroad CF ...	0/2	High	1	Pcs	07/15/2020	07/15/2020	In progress
165	River Inc	Roadbike Canyon Aeroad CF ...	0/2	High	1	Pcs	07/16/2020	07/16/2020	In progress
166	Aquent Systems	Team Bike	0/2	Medium	1	Each	07/17/2020	07/17/2020	Unapproved
167	SG Electronics	Roadbike Canyon Ultimate A...	0/2	Medium	1	Pcs	07/22/2020	07/22/2020	Unapproved
174	ADA Technologies	Team Bike	0/2	Medium	1	Pcs	07/22/2020	07/22/2020	Unapproved
170	Microchips	Roadbike Canyon Ultimate A...	0/2	Medium	1				Unapproved
173	ADA Technologies				1				Unapproved
172					10				Unapproved
171	Mashina Corporation				1				Unapproved

## Organize and prioritize production order backlog

- Comprehensive production order backlog view with status and execution of actions
- Automatic allocation and adjustment of priorities
- Quick access to material requirements for single or multiple production orders
- Simple selection of the next production orders and release stock of work for shop floor employees

1 Organize

2 Execute

3 PDC

4 Monitor

The screenshot displays the PRODUCE / OPERATOR interface. The main header shows the user 'Tino Schaloske' and a 'LOG OUT' button. The left sidebar contains 'My operations' and 'All operations' sections, both with search bars. The main content area is titled '169 | Bike assembly' and shows details for production order 'BC05007 Roadbike Canyon Ultimate AL SLX'. It includes a 'START' button and a 'Partial completed' status. Below this, there are sections for 'Completed quantity', 'Planned quantity', 'Due date', 'Customer', and 'Status'. The 'Resources' section shows a table with columns for Code, Name, Setup time, Planned time, and Completed time. The 'Materials' section shows a table with columns for Code, Name, Planned, Completed, Direct stock, Total stock, Unit of measure, and Warehouse. A modal window titled 'Instructions 2' is open, displaying two steps: '1 Pre assembly of Frame, Handelbar and assembly of wheelset' and '2 The size is for large, medium and small'. A 'DONE' button is at the bottom of the modal.

Order	Item code	Item name	Operation	Customer
169	BC05007	Roadbike Canyon Ultimate AL SLX	Bike assembly	Earthsha
169	BC05007	Roadbike Canyon Ultimate AL SLX	Bike testing	Earthsha
168	BC05001	Roadbike Wheelset Carbon	Wheel assembly	
163	BC05000	Roadbike Canyon Aeroad CF SLX	Bike testing	ADA Tech

Code	Name	Setup time	Planned time	Completed time
R300005	Pre assembly	00:10:00	00:30:00	00:02:58

Code	Name	Planned	Completed	Direct stock	Total stock	Unit of measure	Warehouse
BC05001	Roadbike Wheelset Carbon	1	0	10	10	Pcs	01 - General Warehouse
BC05003	Roadbike Handlebar	1	0	10	10	Pcs	01 - General Warehouse
BC05008	Roadbike Frame Carbone	1	0	0	5	Pcs	01 - General Warehouse

Instructions 2

- 1 Pre assembly of Frame, Handelbar and assembly of wheelset
- 2 The size is for large, medium and small

DONE

## Released operations for production execution

- Shop floor terminal
- Display of released production order backlog
- Access to material and resource requirements
- Display work instructions

1 Organize

2 Execute

3 PDC

4 Monitor

**PRODUCE / OPERATOR** [F1 - TMO] Tino Schaloske LOG OUT

**My operations**

Order	Item code	Item name	Operation	Customer
169	BC05007	Roadbike Canyon Ultimate AL SLX	Bike assembly	Earthsha
169	BC05007	Roadbike Canyon Ultimate AL SLX	Bike testing	Earthsha
168	BC05001	Roadbike Wheelset Carbon	Wheel assembly	
163	BC05000	Roadbike Canyon Aeroad CF SLX	Bike testing	ADA Tech
164	BC05000	Roadbike Canyon Aeroad CF SLX	Bike assembly	Earthsha

**All operations**

Order	Item code	Item name
169	BC05007	Roadbike Canyon Ultir
169	BC05007	Roadbike Canyon Ultir
168	BC05001	Roadbike Wheelset Ca
163	BC05000	Roadbike Canyon Aerc
164	BC05000	Roadbike Canyon Aerc
164	BC05000	Roadbike Canyon Aerc
165	BC05000	Roadbike Canyon Aerc
165	BC05000	Roadbike Canyon Aerc

**Register work** **Bike assembly**

BC05000 Roadbike Canyon Aeroad CF SLX Time spent 00:03:58 Quantity 1 Pcs Scrap -

STATUS QUANTITY RESOURCES MATERIALS REVIEW

**Review**

**Operation status**  **Incomplete**  
The operation will be kept open

**Units created**   
1 Pcs  
Expected 1 Pcs

**Resource time**   
00:03:58  
Expected 01:00:00

**Material differences**

Code	Name	Expected quantity	Used quantity	Status
BC05001	Roadbike Wheelset Carbon	1 Pcs	2 Pcs	More used than expected
BC05008	Roadbike Frame Carbone	1 Pcs	0 Pcs	Less used than expected
BC05005	Roadbike tyres 28"	2 Pcs	3 Pcs	More used than expected

## Production data collection

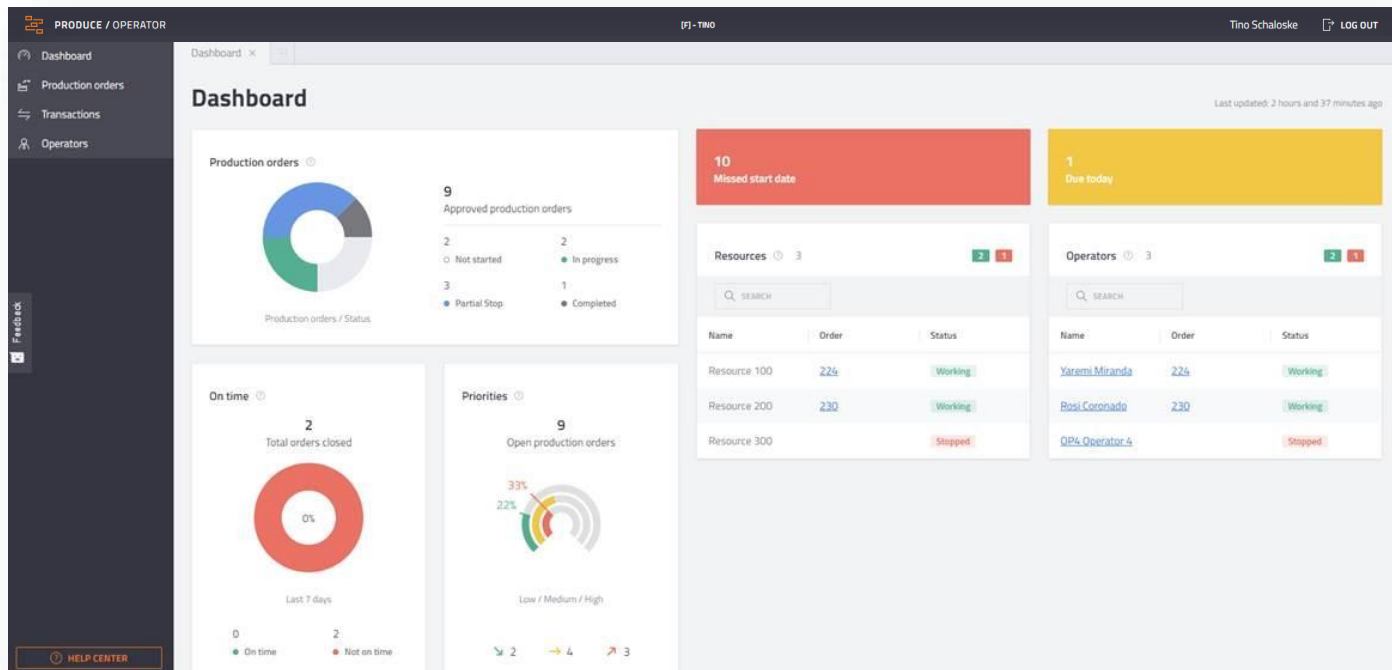
- Start and stop operations
- Register work done and material usage
- Confirm finished production quantities

1 Organize

2 Execute

3 PDC

4 Monitor



## Real-time monitoring

- Visualize your shop floor on a daily dashboard
- Monitor the shop floor activities
- Track production progress in real-time



# The Bio-D **saves 30% of administration time** per week with Build and Produce

## COMPANY NAME

The Bio-D Company Limited

## WEBSITE

[www.biod.co.uk](http://www.biod.co.uk)

## INDUSTRY

Consumer Products Manufacturing

## EMPLOYEES

45+

## BOYUM SOLUTIONS

Boyum Cloud Build

Boyum Cloud Produce

## FEATURED PARTNER

Ascarii

Bio-D offer a range of cleaning products suitable for everyone. Made in the UK from ethically sourced ingredients and 100% recyclable packaging, our products are some of the most sustainable and environmentally friendly cleaning solutions on the market.



### Customer Challenges

- Information kept in spreadsheets outside SAP, which meant only certain employees had access to this data
- Manual paperwork on the factory floor, resulted in errors and caused employees to spend a lot of time filling in and updating the spreadsheets
- Not getting an accurate timings on how long it took to produce products, led to set targets based on inaccurate information



### Solution

- Build, Produce Operator and Produce Manager from Boyum Cloud are innovative, on demand solutions that completely answers our requirements
- Full integration with the SAP platform, transparency and scalability



### Results

- Produce allowed us to reduce the amount of paper as now work orders can be created by shop floor employees.
- Production times are accurately recorded, and we can see in real time what is happening in production
- Build allowed us to store new product development process in one place for all to see, with seamless transition from idea to an actual product

**"BUILD AND PRODUCE HAS MADE US MORE EFFICIENT AS A BUSINESS"**

Nicole Morrell / Head of Finance and Digitalization





## COMPANY

Pidso Propagation Ideas &  
Solutions GmbH

## WEBSITE

[www.pidso.com](http://www.pidso.com)

## INDUSTRY

Hightech

## BOYUM SOLUTIONS

CRM for Outlook  
Boyum Cloud Produce

## PARTNER

ALLDATA IT Systeme

# Improved workflows and **efficient way of working** with Boyum Cloud Produce and CRM for Outlook.

The Austrian high-tech company Pidso Propagation Ideas & Solutions GmbH specializes in the development and production of antennas and antenna systems and is also a one-stop solution provider, offering its customers everything from individual development to customized product solutions. Together with ALLDATA IT Systeme and Boyum IT, the company successfully implemented Boyum Cloud Produce and CRM for Outlook in April 2021

## Why Boyum Cloud Produce and CRM for Outlook?

With **CRM for Outlook**, Pidso recognizes the concrete advantages in the fact that sales opportunities and activities can be created directly in Outlook, which makes daily work much easier, optimizes workflows, and helps to work very efficiently.

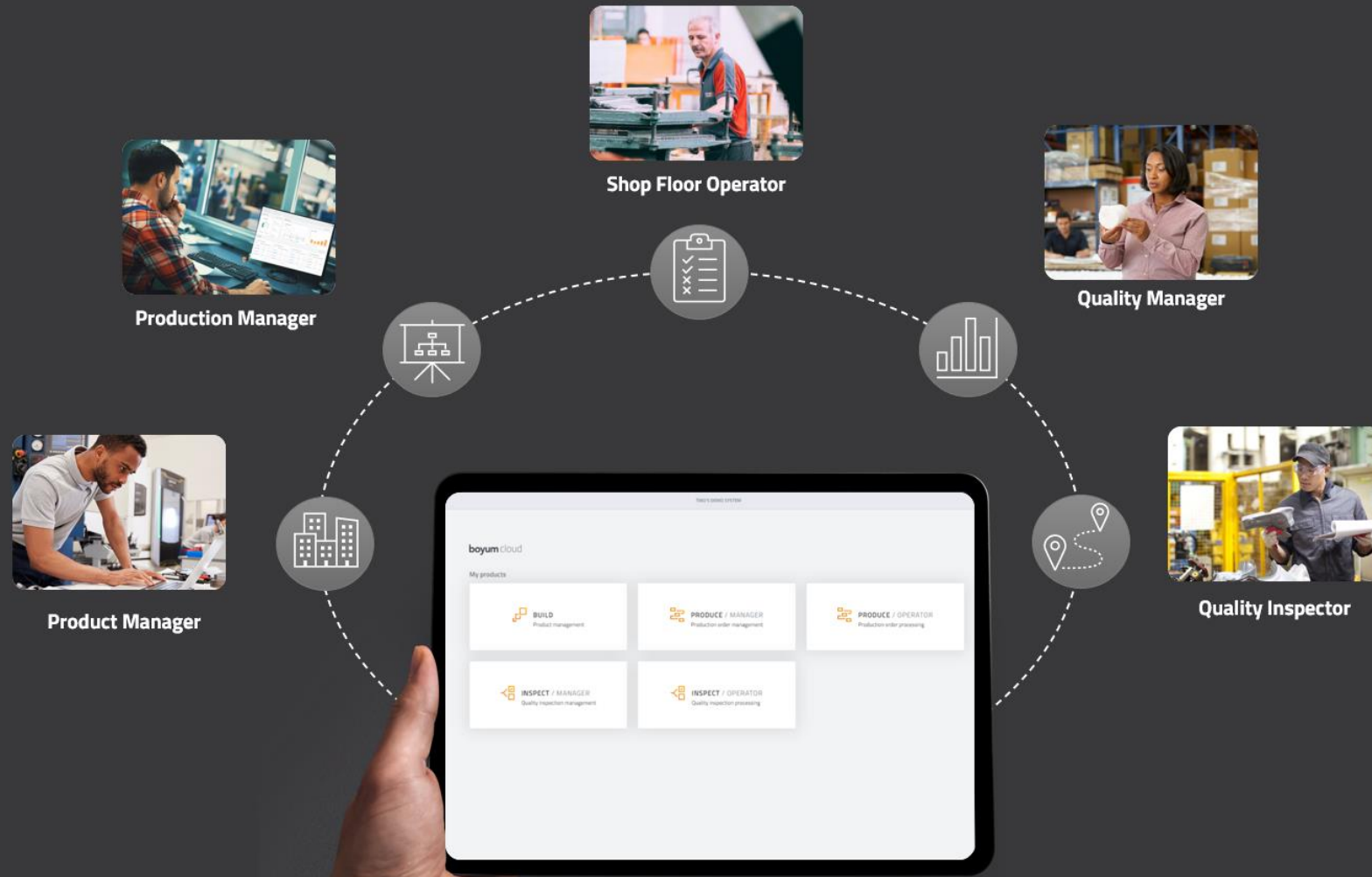
**Boyum Cloud Produce** strongly scores with its dashboard and the clear overview of the production orders. This is especially very helpful for the operators, who can directly take over the production orders and work easily in the daily operations, thus also benefiting from efficient workflows.

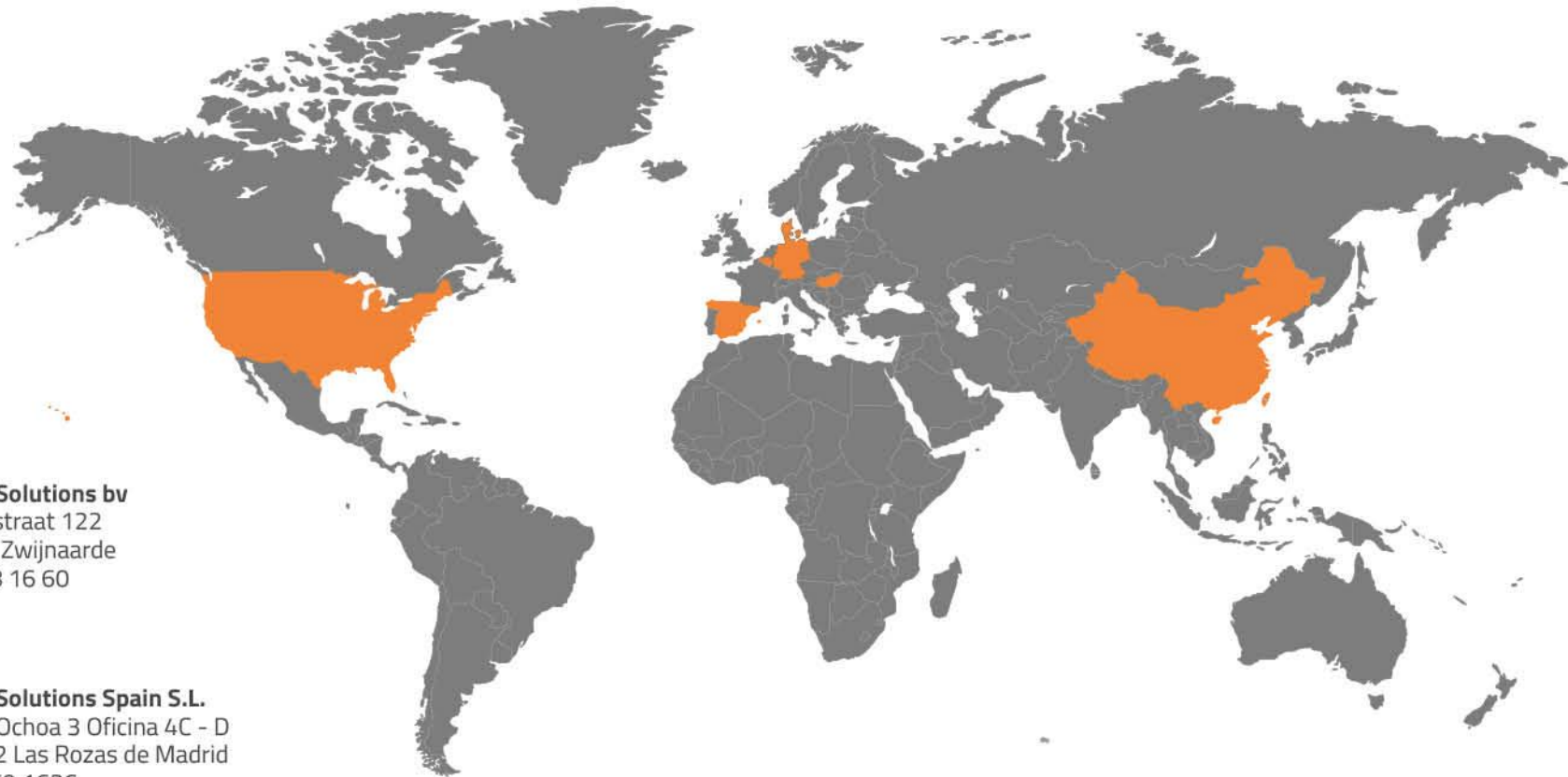
*"HIGH QUALITY, EFFICIENCY AND EFFECTIVENESS ARE IMPORTANT TO US, AND WE HAVE ALREADY HAD VERY GOOD EXPERIENCES WITH BOYUM IT AND CAN RECOMMEND IT."*

Manuel Marbach, Head of Sales and Production at Pidso

# See Produce in a live demo and discover a new way of working

[Sign up for a demo](#)



**DENMARK (Headquarters)**

**Boyum IT Solutions A/S**  
Sintrupvej 71b, 1th  
DK - 8220 Brabrand  
+ 45 87 32 90 00

**GERMANY**

**Boyum IT Solutions GmbH**  
Borsigstraße 20  
DE - 65205 Wiesbaden  
+ 49 6122 170 90 90

**USA**

**Boyum IT Solutions Inc**  
175 SW 7th St - Suite 1503  
Miami - FL 33130, USA  
+ 1 305 495 4737

**BELGIUM**

**Boyum IT Solutions bv**  
Rijvisschestraat 122  
BE - 9052 Zwijnaarde  
+ 32 9 248 16 60

**SPAIN**

**Boyum IT Solutions Spain S.L.**  
C/ Severo Ochoa 3 Oficina 4C - D  
ES - 28232 Las Rozas de Madrid  
+ 34 91 069 1636

**HUNGARY**

**Budapest Development Center**  
Baross u. 52  
HU - 1085 Budapest